



Commercial Lighting



Industrial Lighting



Sports Lighting

MLLG Steel Utility Pole Product Family



**Why
contractors
choose us**



Free Lighting
Plans to ensure
customer
satisfaction



Dedicated
Lighting
Specialist for
each project

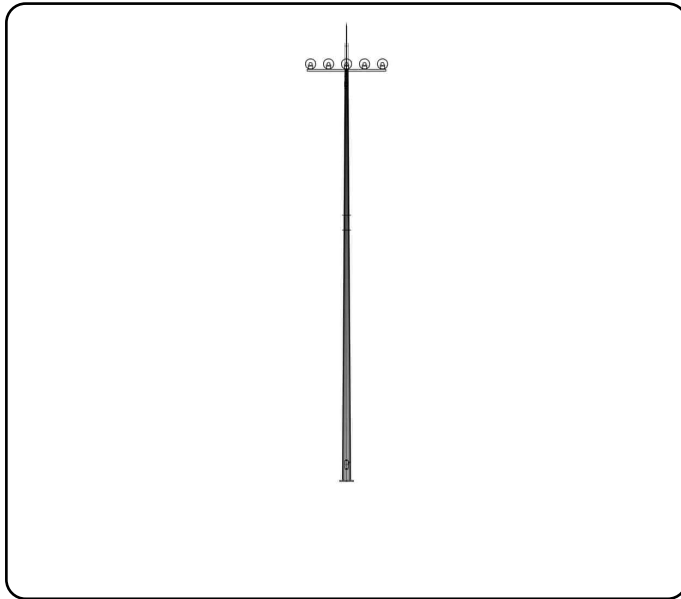


Large
inventory of
LED Lights

Table of Contents

	Page Number
- MLLG-AS-POLE-ST-40-AB-GV-1B-5L	3
- MLLG-AS-POLE-ST-40-AB-GV-2B-10L	4
- MLLG-AS-POLE-ST-50-AB-GV-1B-5	5
- MLLG-AS-POLE-ST-50-AB-GV-2B-10L	6
- MLLG-AS-POLE-ST-60-AB-GV-1B-5	7
- MLLG-AS-POLE-ST-60-AB-GV-2B-10L	8
- MLLG-AS-POLE-ST-70-AB-GV-1B-5L	9
- MLLG-AS-POLE-ST-70-AB-GV-2B-10L	10
- MLLG-POLE-ST-60-[WL]-[B]-[FH]-HM	11
- MLLG-POLE-ST-70-[WL]-[B]-[FH]-HM	12

40 Foot Stadium Light Pole | 1 Cross Arm For Up To 5 Light Fixtures



Product Details

SKU: MLLG-AS-POLE-ST-40-AB-GV-1B-5L

Web ID: 2126

40 Foot Steel Galvanized Stadium Pole with 5 fixture cross arm. Lightning rod included.

Pole designed for 130 mph wind speed per the TIA-222-H Standard. Galvanized finish per ASTM A123.

Pole arrives in 1 section. Connections use galvanized A325 bolts nuts and locking devices. Installation per TIA/EIA-222 and AISC specs.

Unloading Poles/Accessories is the sole responsibility of the recipient (customer) and the recipient (customer) is required to provide all necessary equipment and/or manpower at the time of delivery.

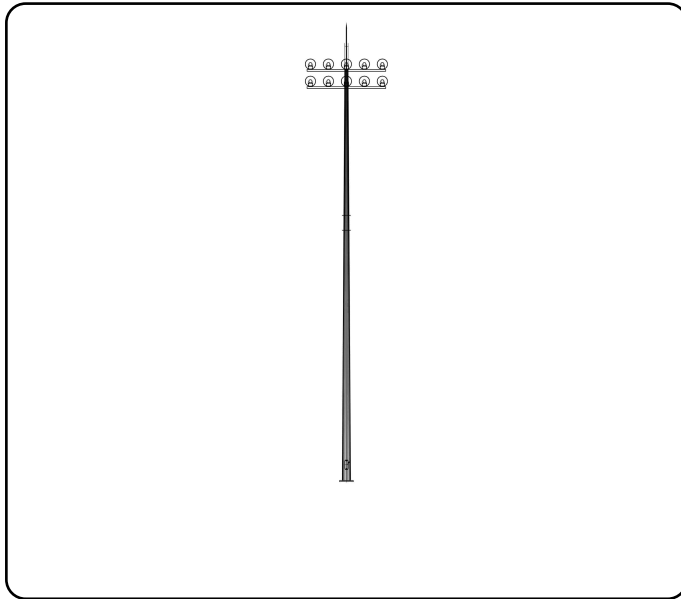
Disclaimer: LED Lighting Supply is not responsible for improper loading (ie what is mounted to the pole) use or foundation design of light poles. Dimensions and specifications of poles are subject to change without notice.

Please be advised that our steel poles are covered solely by a 1-year workmanship warranty which ensures that the poles are free from defects from the manufacturing process such as welds and structural integrity for a period of one year from the date of purchase. This warranty does not cover damage resulting from external factors misuse or normal wear and tear.

Product Specifications

Height:	40	Anchor Bolt Grade:	F1554-55
Specifications:	ASTM	Anchor Bolt Size:	1.25 in
Base Type:	Anchor Base	Number of Pole Sections:	1
Number of Anchor Bolts:	4	Anchor Embedment length:	43 in
Supports:	5 lights	Anchor Bolt Projection:	2 in
Attachments:	(5) Light Cross Arm & 1 Lightning Rod	Base plate grade:	A572-50
Top Cross Arm Height:	38.7 ft	Base plate thickness:	1.378 in
Wind Load Rating:	130 mph	Bolt circle diameter:	14.96 in
Finish:	Galvanized per ASTM A123	Outer diameter:	18.89 in
Number of Sides of Pole:	18	Inner diameter:	10.23 in
Shaft Material:	ASTM A572 GR65	Weight:	600-750 lbs
Base Plate Material:	ASTM A572 GR50	Warranty:	1 Year

40 Foot Stadium Light Pole | 2 Cross Arms For Up To 10 Light Fixtures



Product Details

SKU: MLLG-AS-POLE-ST-40-AB-GV-2B-10L

Web ID: 2127

40 Foot Steel Galvanized Stadium Pole with 2 cross arms and up to 5 fixtures per cross arm. Lightning rod included.

Pole designed for 130 mph wind speed per the TIA-222-H Standard. Galvanized finish per ASTM A123.

Pole arrives in 1 section. Connections use galvanized A325 bolts nuts and locking devices. Installation per TIA/EIA-222 and AISC specs.

Unloading Poles/Accessories is the sole responsibility of the recipient (customer) and the recipient (customer) is required to provide all necessary equipment and/or manpower at the time of delivery.

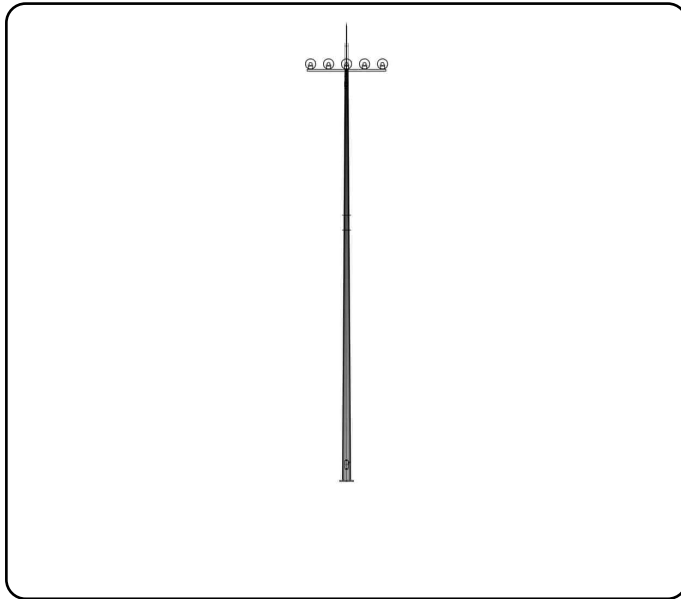
Disclaimer: LED Lighting Supply is not responsible for improper loading (ie what is mounted to the pole) use or foundation design of light poles. Dimensions and specifications of poles are subject to change without notice.

Please be advised that our steel poles are covered solely by a 1-year workmanship warranty which ensures that the poles are free from defects from the manufacturing process such as welds and structural integrity for a period of one year from the date of purchase. This warranty does not cover damage resulting from external factors misuse or normal wear and tear.

Product Specifications

Height:	40	Anchor Bolt Grade:	F1554-55
Specifications:	ASTM	Anchor Bolt Size:	1.25 in
Base Type:	Anchor Base	Number of Pole Sections:	1
Number of Anchor Bolts:	4	Anchor Embedment length:	43 in
Supports:	5 lights	Anchor Bolt Projection:	2 in
Attachments:	(2) 5-Light Cross Arms & 1 Lightning Rod	Base plate grade:	A572-50
Cross Arm Heights:	38 ft and 36 feet	Base plate thickness:	1.378 in
Wind Load Rating:	130 mph	Bolt circle diameter:	16.14 in
Finish:	Galvanized per ASTM A123	Outer diameter:	20.07 in
Number of Sides of Pole:	18	Inner diameter:	11.41 in
Shaft Material:	ASTM A572 GR65	Weight:	1000-1250 lbs
Base Plate Material:	ASTM A572 GR50	Warranty:	1 Year

50 Foot Stadium Light Pole | 1 Cross Arm For Up To 5 Light Fixtures



Product Details

SKU: MLLG-AS-POLE-ST-50-AB-GV-1B-5

Web ID: 2117

50 Foot Steel Galvanized Stadium Pole with 5 fixture cross arm. Lightning rod included.

Pole designed for 130 mph wind speed per the TIA-222-H Standard. Galvanized finish per ASTM A123.

Pole arrives in 2 sections base section 0-36ft and top section 36-50ft. Connections use galvanized A325 bolts nuts and locking devices. Installation per TIA/EIA-222 and AISC specs.

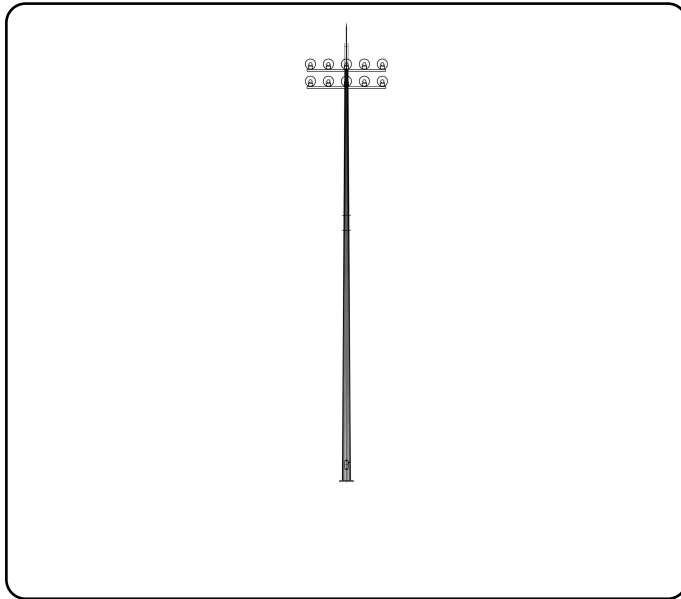
Unloading Poles/Accessories is the sole responsibility of the recipient (customer) and the recipient (customer) is required to provide all necessary equipment and/or manpower at the time of delivery.

Disclaimer: LED Lighting Supply is not responsible for improper loading (ie what is mounted to the pole) use or foundation design of light poles. Dimensions and specifications of poles are subject to change without notice.

Product Specifications

Height:	50	Anchor Bolt Size:	1.25 in
Specifications:	ASTM	Bottom Pole Section Length:	36 ft (0-36 ft)
Base Type:	Anchor Base	Top Pole Section Length:	14 ft (36-50 ft)
Number of Anchor Bolts:	6	Anchor Embedment length:	43 in
Supports:	5 lights	Anchor Bolt Projection:	2 in
Attachments:	(5) Light Cross Arm & 1 Lightning Rod	Base plate grade:	A572-50
Top Cross Arm Height:	50 ft	Base plate thickness:	1.4 in
Wind Load Rating:	130 mph	Bolt circle diameter:	18 in
Finish:	Galvanized per ASTM A123	Outer diameter:	22 in
Number of Sides of Pole:	18	Inner diameter:	11.8 in
Shaft Material:	ASTM A572 GR65	Weight:	1250-1400 lbs
Base Plate Material:	ASTM A572 GR50	Warranty:	1 Year
Anchor Bolt Grade:	F1554-55		

50 Foot Stadium Light Pole | 2 Cross Arms For Up To 5 Light Fixtures On Each Arm



Product Details

SKU: MLLG-AS-POLE-ST-50-AB-GV-2B-10L

Web ID: 2050

50 Foot Steel Galvanized Stadium Pole with (2) 5 fixture cross arms. Cross Arms mount at 47.5ft and 50ft. Lightning rod included.

Pole is designed for 130 mph wind speed per the TIA-222-H Standard. Galvanized finish per ASTM A123.

Pole arrives in 2 sections base section 0-36ft and top section 36-50ft. Connections use galvanized A325 bolts nuts and locking devices. Installation per TIA/EIA-222 and AISC specs.

Unloading Poles/Accessories is the sole responsibility of the recipient (customer) and the recipient (customer) is required to provide all necessary equipment and/or manpower at the time of delivery.

Disclaimer: LED Lighting Supply is not responsible for improper loading (ie what is mounted to the pole) use or foundation design of light poles. Dimensions and specifications of poles are subject to change without notice.

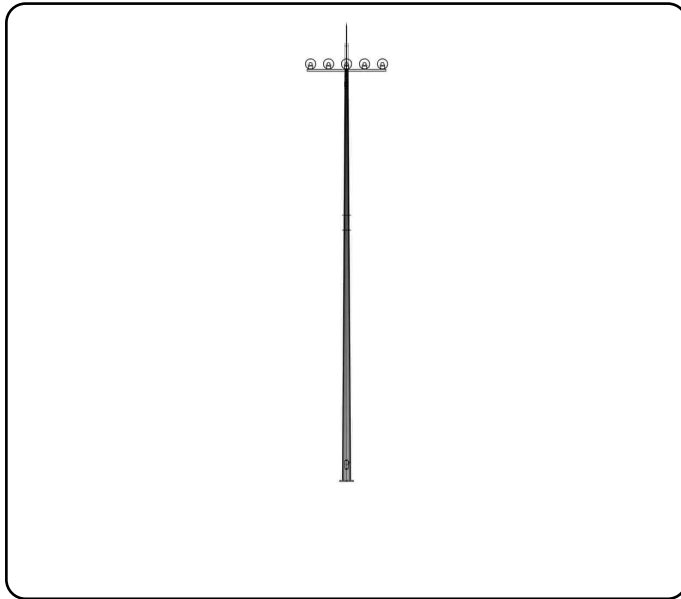
Please be advised that our steel poles are covered solely by a 1-year workmanship warranty which ensures that the poles are free from defects from the manufacturing process such as welds and structural integrity for a period of one year from the date of purchase. This warranty does not cover damage resulting from external factors misuse or normal wear and tear.

Product Specifications

Height:	50	Anchor Bolt Grade:	F1554-55
Specifications:	ASTM	Anchor Bolt Size:	1.25 in
Base Type:	Anchor Base	Bottom Pole Section Length:	36 ft (0-36ft)
Number of Anchor Bolts:	8	Top Pole Section Length:	14 ft (36-50ft)
Supports:	10 lights	Anchor Embedment length:	43 in
Attachments:	2 (5) Light Cross Arms. 1 Lightning Rod	Anchor Bolt Projection:	2 in
Bottom Cross Arm Height:	47.5 ft	Base plate grade:	A572-50
Top Cross Arm Height:	50 ft	Base plate thickness:	1.6 in
Wind Load Rating:	130 mph	Bolt circle diameter:	18 in
Finish:	Galvanized per ASTM A123	Outer diameter:	22 in
Number of Sides of Pole:	18	Inner diameter:	11.8 in
Shaft Material:	ASTM A572 GR65	Weight:	1300-1500 lbs
Base Plate Material:	ASTM A572 GR50	Warranty:	1 Year

Product enhancements may result in specification changes without notice. Contact us for the latest information

60 Foot Stadium Light Pole | 1 Cross Arm For Up To 5 Light Fixtures



Product Details

SKU: MLLG-AS-POLE-ST-60-AB-GV-1B-5

Web ID: 2118

60-Foot Steel Galvanized Stadium Pole with 5 fixture cross arm. Lightning rod included.

Pole designed for 130 mph wind speed per the TIA-222-H Standard. Galvanized finish per ASTM A123.

Pole arrives in 2 sections base section 0-36ft and top section 36-60ft. Connections use galvanized A325 bolts nuts and locking devices. Installation per TIA/EIA-222 and AISC specs.

Unloading Poles/Accessories is the sole responsibility of the recipient (customer) and the recipient (customer) is required to provide all necessary equipment and/or manpower at the time of delivery.

Disclaimer: LED Lighting Supply is not responsible for improper loading (ie what is mounted to the pole) use or foundation design of light poles. Dimensions and specifications of poles are subject to change without notice.

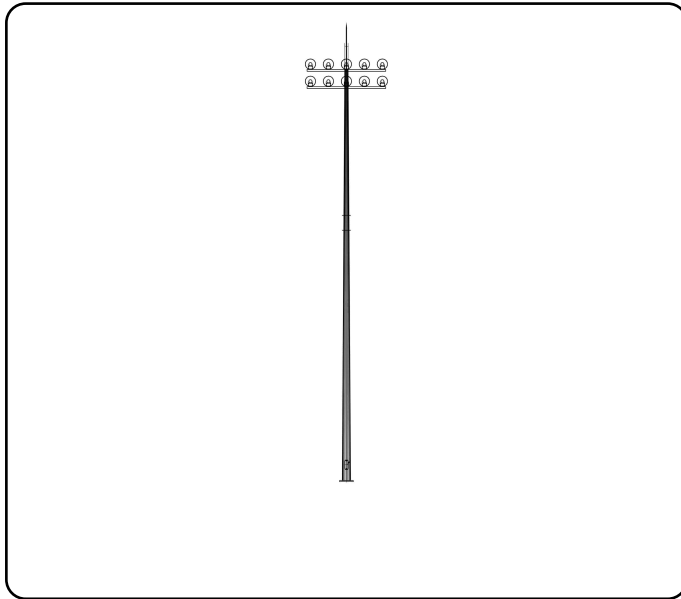
Please be advised that our steel poles are covered solely by a 1-year workmanship warranty which ensures that the poles are free from defects from the manufacturing process such as welds and structural integrity for a period of one year from the date of purchase. This warranty does not cover damage resulting from external factors misuse or normal wear and tear.

Product Specifications

Height:	60	Anchor Bolt Size:	1.25 in
Specifications:	ASTM	Bottom Pole Section Length:	36 ft (0-36 ft)
Base Type:	Anchor Base	Top Pole Section Length:	24 ft (36-50 ft)
Number of Anchor Bolts:	6	Anchor Embedment length:	43 in
Supports:	5 lights	Anchor Bolt Projection:	2 in
Attachments:	(5) Light Cross Arm & 1 Lightning Rod	Base plate grade:	A572-50
Top Cross Arm Height:	60 ft	Base plate thickness:	1.6 in
Wind Load Rating:	130 mph	Bolt circle diameter:	19.2 in
Finish:	Galvanized per ASTM A123	Outer diameter:	23 in
Number of Sides of Pole:	18	Inner diameter:	11.8 in
Shaft Material:	ASTM A572 GR65	Weight:	1300-1500 lbs
Base Plate Material:	ASTM A572 GR50	Warranty:	1 Year
Anchor Bolt Grade:	F1554-55		

Product enhancements may result in specification changes without notice. Contact us for the latest information

60 Foot Stadium Light Pole | 2 Cross Arms For Up To 5 Light Fixtures On Each Arm



Product Details

SKU: MLLG-AS-POLE-ST-60-AB-GV-2B-10L

Web ID: 2051

60 Foot Steel Galvanized Stadium Pole with (2) 5 fixture cross arms. Cross Arms mount at 57.5 ft and 60 ft. Lightning rod included.

Pole is designed for 130 mph wind speed per the TIA-222-H Standard. Galvanized finish per ASTM A123.

Pole arrives in 2 sections base section 0-36 ft and top section 36-60 ft. Connections use galvanized A325 bolts nuts and locking devices. Installation per TIA/EIA-222 and AISC specs.

Unloading Poles/Accessories is the sole responsibility of the recipient (customer) and the recipient (customer) is required to provide all necessary equipment and/or manpower at the time of delivery.

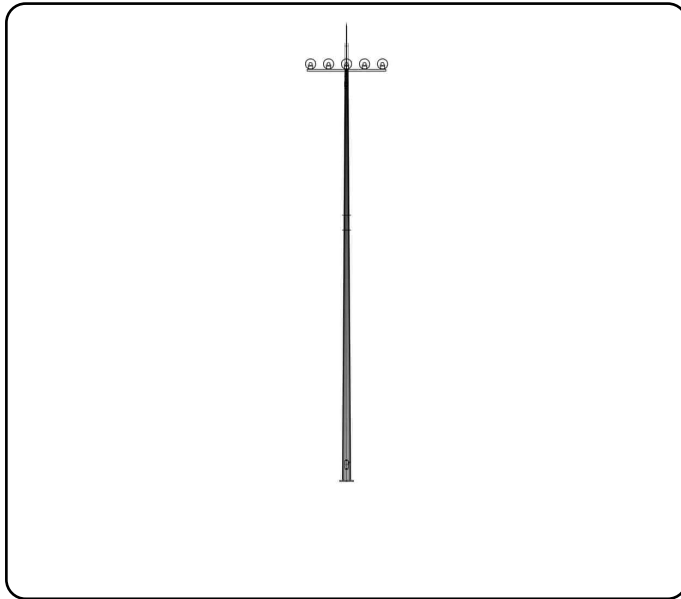
Disclaimer: LED Lighting Supply is not responsible for improper loading (ie what is mounted to the pole) use or foundation design of light poles. Dimensions and specifications of poles are subject to change without notice.

Please be advised that our steel poles are covered solely by a 1-year workmanship warranty which ensures that the poles are free from defects from the manufacturing process such as welds and structural integrity for a period of one year from the date of purchase. This warranty does not cover damage resulting from external factors misuse or normal wear and tear.

Product Specifications

Height:	60	Anchor Bolt Grade:	F1554-55
Specifications:	ASTM	Anchor Bolt Size:	1.25 in
Base Type:	Anchor Base	Bottom Pole Section Length:	36 ft (0-36 ft)
Number of Anchor Bolts:	8	Top Pole Section Length:	24 ft (36-60 ft)
Supports:	10 lights	Anchor Embedment length:	43 in
Attachments:	2 (5) Light Cross Arms. 1 Lightning Rod	Anchor Bolt Projection:	2 in
Bottom Cross Arm Height:	57.5 ft	Base plate grade:	A572-50
Top Cross Arm Height:	60 ft	Base plate thickness:	1.9 in
Wind Load Rating:	130 mph	Bolt circle diameter:	20 in
Finish:	Galvanized per ASTM A123	Outer diameter:	24 in
Number of Sides of Pole:	18	Inner diameter:	12.5 in
Shaft Material:	ASTM A572 GR65	Weight:	1400-1600 lbs
Base Plate Material:	ASTM A572 GR50	Warranty:	1 Year
Product enhancements may result in specification changes without notice. Contact us for the latest information			

70 Foot Stadium Light Pole | 1 Cross Arm For Up To 5 Light Fixtures



Product Details

SKU: MLLG-AS-POLE-ST-70-AB-GV-1B-5L

Web ID: 2128

70-Foot Steel Galvanized Stadium Pole with 5 fixture cross arm. Lightning rod included.

Pole designed for 130 mph wind speed per the TIA-222-H Standard. Galvanized finish per ASTM A123.

Pole arrives in 2 sections base section 0-36ft and top section 36-70ft. Connections use galvanized A325 bolts nuts and locking devices. Installation per TIA/EIA-222 and AISC specs.

Unloading Poles/Accessories is the sole responsibility of the recipient (customer) and the recipient (customer) is required to provide all necessary equipment and/or manpower at the time of delivery.

Disclaimer: LED Lighting Supply is not responsible for improper loading (ie what is mounted to the pole) use or foundation design of light poles. Dimensions and specifications of poles are subject to change without notice.

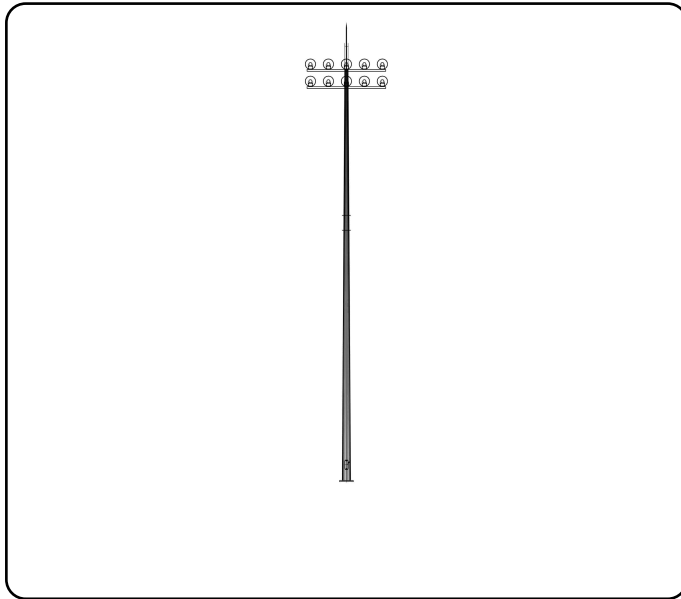
Please be advised that our steel poles are covered solely by a 1-year workmanship warranty which ensures that the poles are free from defects from the manufacturing process such as welds and structural integrity for a period of one year from the date of purchase. This warranty does not cover damage resulting from external factors misuse or normal wear and tear.

Product Specifications

Height:	70	Anchor Bolt Size:	1.25 in
Specifications:	ASTM	Bottom Pole Section Length:	36 ft (0-36 ft)
Base Type:	Anchor Base	Top Pole Section Length:	34 ft (36-50 ft)
Number of Anchor Bolts:	6	Anchor Embedment length:	43 in
Supports:	5 lights	Anchor Bolt Projection:	2 in
Attachments:	(5) Light Cross Arm & 1 Lightning Rod	Base plate grade:	A572-50
Top Cross Arm Height:	70 ft	Base plate thickness:	1.6 in
Wind Load Rating:	115 mph	Bolt circle diameter:	19.68 in
Finish:	Galvanized per ASTM A123	Outer diameter:	23.62 in
Number of Sides of Pole:	18	Inner diameter:	12.99 in
Shaft Material:	ASTM A572 GR65	Weight:	1500-1700 lbs
Base Plate Material:	ASTM A572 GR50	Warranty:	1 Year
Anchor Bolt Grade:	F1554-55		

Product enhancements may result in specification changes without notice. Contact us for the latest information

70 Foot Stadium Light Pole | 2 Cross Arms For Up To 5 Light Fixtures On Each Arm



Product Details

SKU: MLLG-AS-POLE-ST-70-AB-GV-2B-10L

Web ID: 2129

70 Foot Steel Galvanized Stadium Pole with (2) 5 fixture cross arms. Cross Arms mount at 67.5 ft and 70 ft. Lightning rod included.

Pole is designed for 130 mph wind speed per the TIA-222-H Standard. Galvanized finish per ASTM A123.

Pole arrives in 2 sections base section 0-36 ft and top section 36-70 ft. Connections use galvanized A325 bolts nuts and locking devices. Installation per TIA/EIA-222 and AISC specs.

Unloading Poles/Accessories is the sole responsibility of the recipient (customer) and the recipient (customer) is required to provide all necessary equipment and/or manpower at the time of delivery.

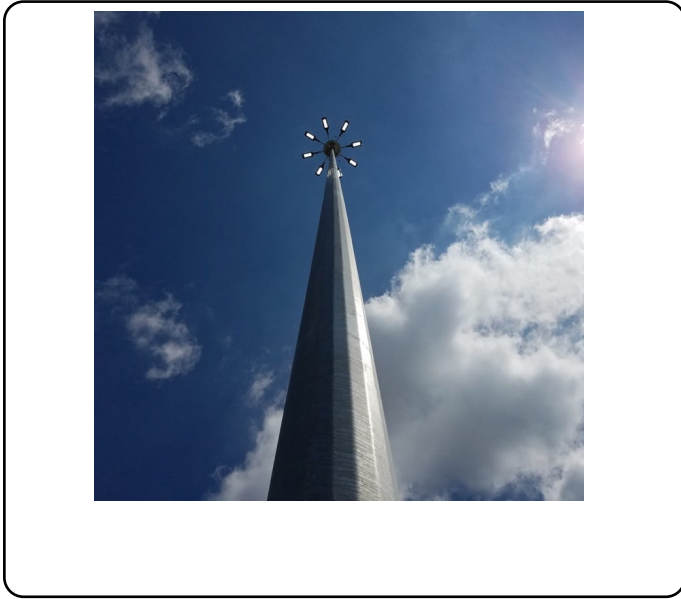
Disclaimer: LED Lighting Supply is not responsible for improper loading (ie what is mounted to the pole) use or foundation design of light poles. Dimensions and specifications of poles are subject to change without notice.

Please be advised that our steel poles are covered solely by a 1-year workmanship warranty which ensures that the poles are free from defects from the manufacturing process such as welds and structural integrity for a period of one year from the date of purchase. This warranty does not cover damage resulting from external factors misuse or normal wear and tear.

Product Specifications

Height:	70	Anchor Bolt Grade:	F1554-55
Specifications:	ASTM	Anchor Bolt Size:	1.25 in
Base Type:	Anchor Base	Bottom Pole Section Length:	36 ft (0-36 ft)
Number of Anchor Bolts:	10	Top Pole Section Length:	34 ft (36-70 ft)
Supports:	10 lights	Anchor Embedment length:	43 in
Attachments:	2 (5) Light Cross Arms. 1 Lightning Rod	Anchor Bolt Projection:	2 in
Bottom Cross Arm Height:	57.5 ft	Base plate grade:	A572-50
Top Cross Arm Height:	60 ft	Base plate thickness:	1.6 in
Wind Load Rating:	115 mph	Bolt circle diameter:	20.47 in
Finish:	Galvanized per ASTM A123	Outer diameter:	24.4 in
Number of Sides of Pole:	18	Inner diameter:	19.78 in
Shaft Material:	ASTM A572 GR65	Weight:	2000-2300 lbs
Base Plate Material:	ASTM A572 GR50	Warranty:	1 Year

Product enhancements may result in specification changes without notice. Contact us for the latest information



Product Details

SKU: MLLG-POLE-ST-60-[WL]-[B]-[FH]-HM

Web ID: 2065

Our 60 foot steel poles are custom engineered to fit each project requirement. Submittal drawings and an engineering report are provided as needed upon purchase.

Available Options:

Base Style: Anchor | Direct Embed | Stub

Finish Options: Galvanized | Bronze Powder | Black Powder | White Powder | Gray Powder Tapered or Non-Tapered Climbing Steps High Mast Light Hoist System Pre-Wiring Service Platform Lightning Protection Nut Covers Transformer Base Duplex Receptacle Festoon Box Ground Fault Interrupt Vibration Damper

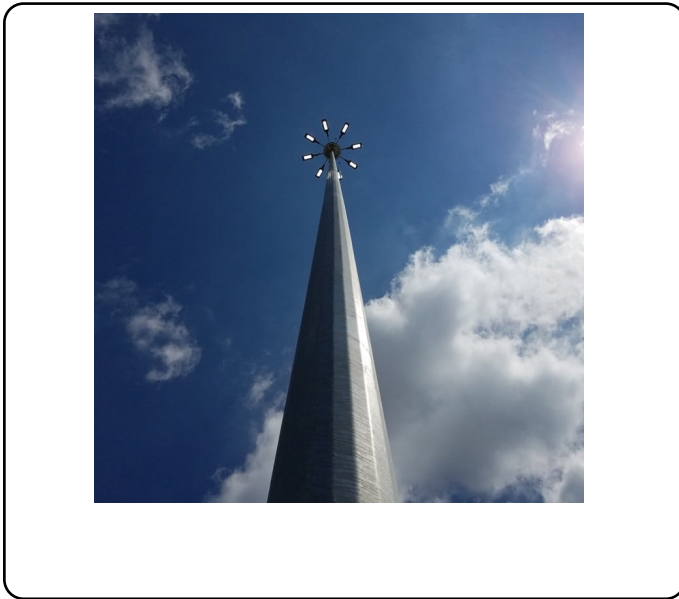
Disclaimer: LED Lighting Supply is not responsible for improper loading (ie what is mounted to the pole) use or foundation design of light poles. Dimensions and specifications of poles are subject to change without notice.

Please be advised that our steel poles are covered solely by a 1-year workmanship warranty which ensures that the poles are free from defects from the manufacturing process such as welds and structural integrity for a period of one year from the date of purchase. This warranty does not cover damage resulting from external factors misuse or normal wear and tear.

Product Specifications

Height:	60 feet	Wind Load Rating:	Designed To AASHTO Standards
Base Style:	Anchor Direct Embed Stub	Lead Time:	8 to 10 weeks
Finish:	Galvanized Powder	Weight:	1300-1600 lbs
Width:	Designed To AASHTO Standards	Warranty:	1 Year
Weight:	Designed To AASHTO Standards		

70 Foot Steel High Mast Light Pole



Product Details

SKU: MLLG-POLE-ST-70-[WL]-[B]-[FH]-HM

Web ID: 2066

Our 70 foot steel poles are custom engineered to fit each project requirement. Submittal drawings and an engineering report are provided as needed upon purchase.

Available Options:

Base Style: Anchor | Direct Embed | Stub

Finish Options: Galvanized | Bronze Powder | Black Powder | White Powder | Gray Powder Tapered or Non-Tapered Climbing Steps High Mast Light Hoist System Pre-Wiring Service Platform Lightning Protection Nut Covers Transformer Base Duplex Receptacle Festoon Box Ground Fault Interrupt Vibration Damper

Disclaimer: LED Lighting Supply is not responsible for improper loading (ie what is mounted to the pole) use or foundation design of light poles. Dimensions and specifications of poles are subject to change without notice.

Please be advised that our steel poles are covered solely by a 1-year workmanship warranty which ensures that the poles are free from defects from the manufacturing process such as welds and structural integrity for a period of one year from the date of purchase. This warranty does not cover damage resulting from external factors misuse or normal wear and tear.

Product Specifications

Height:	70 feet	Wind Load Rating:	Designed To AASHTO Standards
Base Style:	Anchor Direct Embed Stub	Lead Time:	8 to 10 weeks
Finish:	Galvanized Powder	Weight:	1500-2300 lbs
Width:	Designed To AASHTO Standards	Warranty:	1 Year
Weight:	Designed To AASHTO Standards		