



Commercial Lighting



Industrial Lighting



Sports Lighting

MLLG-LS-LED-HB High Temperature Product Family



**Why
contractors
choose us**



Free Lighting
Plans to ensure
customer
satisfaction



Dedicated
Lighting
Specialist for
each project



Large
inventory of
LED Lights

Table of Contents

	Page Number
- MLLG-LS-LED-HB-40-[Color]-HT-[V]	3
- MLLG-LS-LED-HB-100-5-90-HT100	4
- MLLG-LS-LED-HB-150-5-90-HT100	5
- MLLG-LS-LED-HB-200-5-90-HT100	6
- LLS-LS-HB-50-50-HT150	7
- LLS-LS-HB-100-50-HT150	8
- LLS-LS-HB-150-50-HT150	9
- LLS-LS-HB-200-50-HT150	10
- MLLG-LS-LED-HB-100-[Color]-HT-[V]	11
- MLLG-LS-LED-HB-150-[Color]-HT-[V]	12
- MLLG-LS-LED-HB-200-[Color]-HT-[V]	13
- MLLG-LS-LED-HB-300-[Color]-HT-[V]	14
- MLLG-LS-LED-HB-400-[Color]-HT-[V]	15

40 Watt LED High Temperature Fixture | 6000 Lumens | 5000K



Product Details

SKU: MLLG-LS-LED-HB-40-[Color]-HT-[V]

Web ID: 1735

40 Watt LED high temperature fixture is energy efficient with a 150 lumens/watt producing 6000 lumens output replacing 150 Watt Metal Halide.

Designed for High Temperature and Cold Temperature conditions this high temperature fixture has a massive custom heat sink that allows it to operate in temperatures from -85 F to 194 F.

You can choose either 100V-277V or 347V-480V with 4000K or 5000K color temperature. The fixture is available with Eye-Hook or Pendant mount for quick and easy installation.

Product Specifications

Watts:	40	Dimmable:	No
Lumens:	6000	Beam Angle:	10° 25° 40° 60° 90° 120°
Lumens/Watt:	150	Frequency:	50/60 hz
Replaces:	150 Watt Metal Halide	Power Factor:	> .95
Color Temp:	4000K 5000K	THD:	< 15%
CRI:	80+	Housing:	Aluminum
IP Rating:	IP66	Fixture Color:	Gray
Input Voltage:	100V-277V 347V-480V	Mounting:	Eye-Hook Pendant
Operating Temp:	-85°F to +194°F	Dimensions:	8.5 in X 12 in X 8.65 in
Rated Life:	70,000 hours	Weight:	12 lbs
		Warranty:	5 years

100 Watt High Temperature Light | 15000 Lumens | 5000K | 100-277V



Product Details

SKU: MLLG-LS-LED-HB-100-5-90-HT100

Web ID: 1817

100 Watt LED high temperature fixture is energy efficient with a 150 lumens/watt producing 15000 lumens output replacing 400 Watt Metal Halide.

Designed for High Temperature and Cold Temperature conditions this high temperature fixture has a massive custom heat sink that allows it to operate in temperatures from -85 F to 212 F.

You can choose either 100V-277V with 5000K color temperature. The fixture is available with Eye-Hook or Pendant or Trunnion mount for quick and easy installation.

Product Specifications

Watts:	100	Dimmable:	No
Lumens:	15000	Beam Angle:	25° 40° 60° 90°
Lumens/Watt:	150	Frequency:	50/60 hz
Replaces:	400 Watt Metal Halide	Power Factor:	> .95
Color Temp:	5000K	THD:	< 15%
CRI:	70+	Housing:	Aluminum
IP Rating:	IP66	Fixture Color:	Gray
Input Voltage:	100V-277V	Mounting:	Eye-Hook Pendant Trunnion
Surge Protection:	6KV	Dimensions:	13.14 in X 10.31 in X 5.11 in
Operating Temp:	-85°F to +212°F	Weight:	13.2 lbs
Rated Life:	50,000 (L70) hours	Warranty:	5 years

150 Watt LED High Temperature Light | 22500 Lumens | 5000K | 100-277V



Product Details

SKU: MLLG-LS-LED-HB-150-5-90-HT100

Web ID: 2120

150 Watt LED high temperature fixture is energy efficient with a 150 lumens/watt producing 22500 lumens output replacing 400 Watt Metal Halide.

Designed for High Temperature and Cold Temperature conditions this high temperature fixture has a massive custom heat sink that allows it to operate in temperatures from -85 F to 212 F.

You can choose either 100V-277V with 5000K color temperature. The fixture is available with Eye-Hook or Pendant or Trunnion mount for quick and easy installation.

Product Specifications

Watts:	150	Dimmable:	No
Lumens:	22500	Beam Angle:	10° 25° 40° 60° 90°
Lumens/Watt:	150	Frequency:	50/60 hz
Replaces:	400 Watt Metal Halide	Power Factor:	> .95
Color Temp:	5000K	THD:	< 15%
CRI:	80+	Housing:	Aluminum
IP Rating:	IP66	Fixture Color:	Gray
Input Voltage:	100V-277V	Mounting:	Eye-Hook Pendant Trunnion
Surge Protection:	6KV	Dimensions:	13.14 in X 10.31 in X 5.11 in
Operating Temp:	-85°F to +212°F	Weight:	13.2 lbs
Rated Life:	70,000 hours	Warranty:	5 years

200 Watt LED High Temperature Light | 30000 Lumens | 5000K | 100-277V



Product Details

SKU: MLLG-LS-LED-HB-200-5-90-HT100

Web ID: 1818

200 Watt LED high temperature fixture is energy efficient with a 150 lumens/watt producing 30000 lumens output replacing 400 Watt Metal Halide.

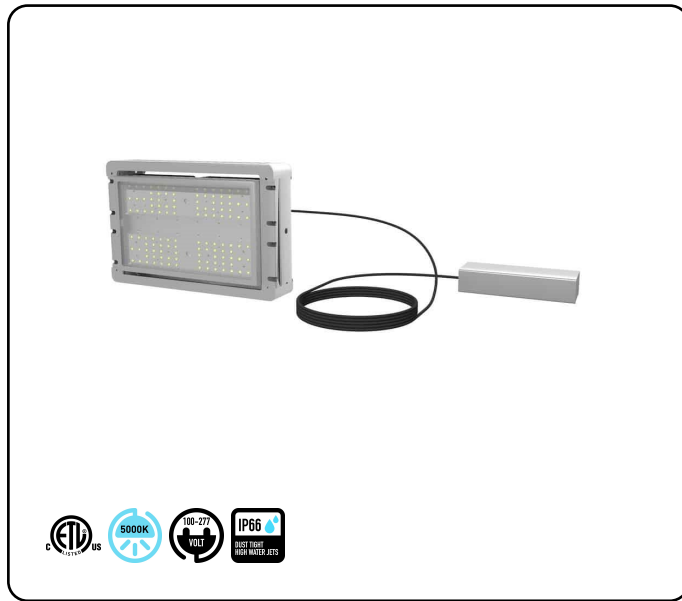
Designed for High Temperature and Cold Temperature conditions this high temperature fixture has a massive custom heat sink that allows it to operate in temperatures from -85 F to 212 F.

You can choose either 100V-277V with 5000K color temperature. The fixture is available with Eye-Hook or Pendant or Trunnion mount for quick and easy installation.

Product Specifications

Watts:	200	Dimmable:	No
Lumens:	30000	Beam Angle:	25° 40° 60° 90°
Lumens/Watt:	150	Frequency:	50/60 hz
Replaces:	400 Watt Metal Halide	Power Factor:	> .95
Color Temp:	5000K	THD:	< 15%
CRI:	70+	Housing:	Aluminum
IP Rating:	IP66	Fixture Color:	Gray
Input Voltage:	100V-277V	Mounting:	Eye-Hook Pendant Trunnion
Surge Protection:	6KV	Dimensions:	13.14 in X 10.31 in X 5.11 in
Operating Temp:	-85°F to +212°F	Weight:	13.2 lbs
Rated Life:	50,000 (L70) hours	Warranty:	5 years

50 Watt LED High Temperature Light | 7500 Lumens | 5000K | 100-277V



Product Details

SKU: LLS-LS-HB-50-50-HT150

Web ID: 2165

50 Watt LED high temperature fixture is energy efficient with a 150 lumens/watt producing 7500 lumens output replacing 250 Watt Metal Halide. This fixture is equipped with a external driver that can be mounted up to 68 feet away. Driver must be installed in location where temperature does not exceed 212 F. Comes with a standard 15 feet 5 meter cord.

Designed for High Temperature and Cold Temperature conditions this high temperature light has a large custom heat sink that allows it to operate in temperatures from -40 F to 302 F.

Standard Voltage is 100V-277V with 5000K color temperature. The fixture is available with Eye-Hook (std) or Pendant or Yoke (std) mount for quick and easy installation.

Options:

MLLG-LS-HT150-10M: 32 foot (10 meter) cord for remote driver installation

MLLG-LS-HT150-15M: 49 foot (15 meter) cord for remote driver installation

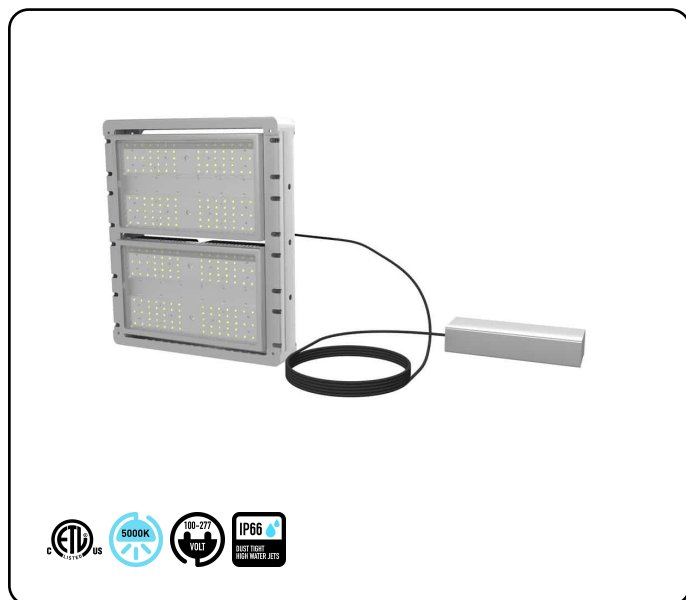
MLLG-LS-HT150-20M: 68 foot (20 meter) cord for remote driver installation

MLLG-LS-LED-HB-HT-Pendant mount

Product Specifications

Watts:	50	Dimmable:	No
Lumens:	7500	Beam Angle:	120°
Lumens/Watt:	150	Optics:	Tempered Glass
Replaces:	250 Watt Metal Halide	Frequency:	50/60 hz
Color Temp:	5000K	Power Factor:	> .95
CRI:	75+	THD:	< 15%
IP Rating:	IP66	Housing:	Aluminum
Input Voltage:	100V-277V	Fixture Color:	Silver
Surge Protection:	6KV	Mounting:	Eye-Hook (std) Pendant Yoke (std)
Operating Temp:	-40°F to +302°F	Dimensions:	7.25 in H X 12 in W X 4 in D
Rated Life:	100,000 (L70) hours	Weight:	11 lbs
		Warranty:	5 years

100 Watt LED High Temperature Light | 15000 Lumens | 5000K | 100-277V



Product Details

SKU: LLS-LS-HB-100-50-HT150

Web ID: 2166

100 Watt LED high temperature fixture is energy efficient with a 150 lumens/watt producing 15000 lumens output replacing 400 Watt Metal Halide. This fixture is equipped with a external driver that can be mounted up to 68 feet away. Driver must be installed in location where temperature does not exceed 212 F. Comes standard with a 5 meter (15 ft) long cord.

Designed for High Temperature and Cold Temperature conditions this high temperature light has a large custom heat sink that allows it to operate in temperatures from -40 F to 302 F.

Standard Voltage is 100V-277V with 5000K color temperature. The fixture is available with Eye-Hook (std) or Pendant or Yoke (std) mount for quick and easy installation.

Options:

MLLG-LS-HT150-10M: 32 foot (10 meter) cord for remote driver installation

MLLG-LS-HT150-15M: 49 foot (15 meter) cord for remote driver installation

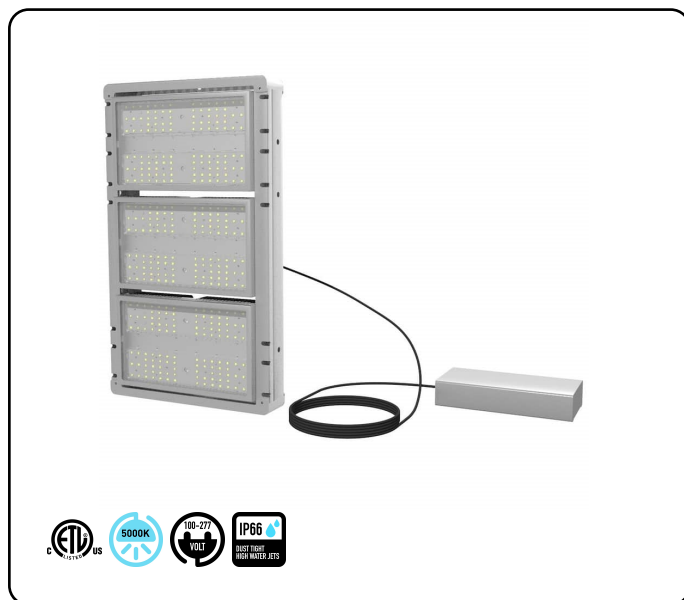
MLLG-LS-HT150-20M: 68 foot (20 meter) cord for remote driver installation

MLLG-LS-LED-HB-HT-Pendant mount

Product Specifications

Watts:	100	Dimmable:	No
Lumens:	15000	Beam Angle:	120°
Lumens/Watt:	150	Optics:	Tempered Glass
Replaces:	400 Watt Metal Halide	Frequency:	50/60 hz
Color Temp:	5000K	Power Factor:	> .95
CRI:	75+	THD:	< 15%
IP Rating:	IP66	Housing:	Aluminum
Input Voltage:	100V-277V	Fixture Color:	Silver
Surge Protection:	6KV	Mounting:	Eye-Hook (std) Pendant Yoke (std)
Operating Temp:	-40°F to +302°F	Dimensions:	14 in H X 12 in W X 4 in D
Rated Life:	100,000 (L70) hours	Weight:	16 lbs
		Warranty:	5 years

150 Watt LED High Temperature Light | 22500 Lumens | 5000K | 100-277V



Product Details

SKU: LLS-LS-HB-150-50-HT150

Web ID: 2167

150 Watt LED high temperature fixture is energy efficient with a 150 lumens/watt producing 22500 lumens output replacing 400 Watt Metal Halide. This fixture is equipped with a external driver that can be mounted up to 68 feet away. Driver must be installed in location where temperature does not exceed 212 F. Comes standard with a 5 meter (15 ft) long cord.

Designed for High Temperature and Cold Temperature conditions this high temperature light has a large custom heat sink that allows it to operate in temperatures from -40 F to 302 F.

Standard Voltage is 100V-277V with 5000K color temperature. The fixture is available with Eye-Hook (std) or Pendant or Yoke (std) mount for quick and easy installation.

Options:

MLLG-LS-HT150-10M: 32 foot (10 meter) cord for remote driver installation

MLLG-LS-HT150-15M: 49 foot (15 meter) cord for remote driver installation

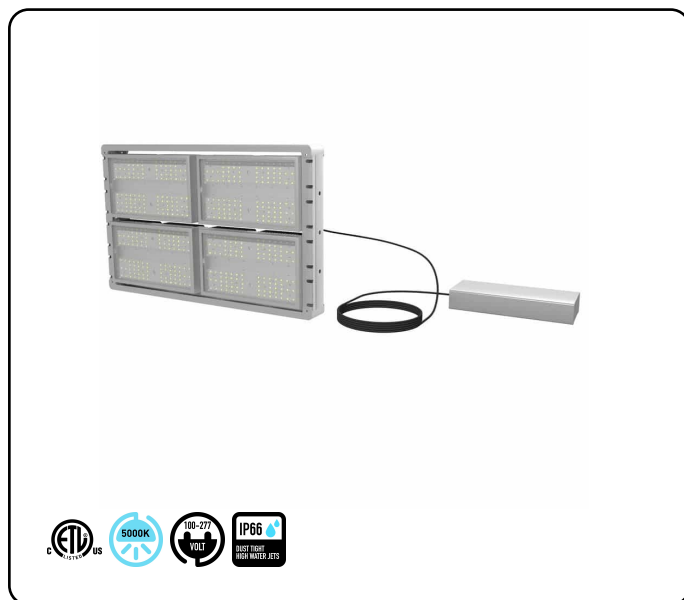
MLLG-LS-HT150-20M: 68 foot (20 meter) cord for remote driver installation

MLLG-LS-LED-HB-HT-Pendant mount

Product Specifications

Watts:	150	Dimmable:	No
Lumens:	22500	Beam Angle:	120°
Lumens/Watt:	150	Optics:	Tempered Glass
Replaces:	400 Watt Metal Halide	Frequency:	50/60 hz
Color Temp:	5000K	Power Factor:	> .95
CRI:	75+	THD:	< 15%
IP Rating:	IP66	Housing:	Aluminum
Input Voltage:	100V-277V	Fixture Color:	Silver
Surge Protection:	6KV	Mounting:	Eye-Hook (std) Pendant Yoke (std)
Operating Temp:	-40°F to +302°F	Dimensions:	22 in H X 12 in W X 4 in D
Rated Life:	100,000 (L70) hours	Weight:	25 lbs
		Warranty:	5 years

200 Watt LED High Temperature Light | 30000 Lumens | 5000K | 100-277V



Product Details

SKU: LLS-LS-HB-200-50-HT150

Web ID: 2168

200 Watt LED high temperature fixture is energy efficient with a 150 lumens/watt producing 30000 lumens output replacing 400 Watt Metal Halide. This fixture is equipped with a external driver that can be mounted up to 68 feet away. Driver must be installed in location where temperature does not exceed 212 F. Comes standard with a 5 meter (15 ft) long cord.

Designed for High Temperature and Cold Temperature conditions this high temperature light has a large custom heat sink that allows it to operate in temperatures from -40 F to 302 F.

Standard Voltage is 100V-277V with 5000K color temperature. The fixture is available with Eye-Hook (std) or Pendant or Yoke (std) mount for quick and easy installation.

Options:

MLLG-LS-HT150-10M: 32 foot (10 meter) cord for remote driver installation

MLLG-LS-HT150-15M: 49 foot (15 meter) cord for remote driver installation

MLLG-LS-HT150-20M: 68 foot (20 meter) cord for remote driver installation

MLLG-LS-LED-HB-HT-Pendant mount

Product Specifications

Watts:	200	Dimmable:	No
Lumens:	30000	Beam Angle:	120°
Lumens/Watt:	150	Optics:	Tempered Glass
Replaces:	400 Watt Metal Halide	Frequency:	50/60 hz
Color Temp:	5000K	Power Factor:	> .95
CRI:	75+	THD:	< 15%
IP Rating:	IP66	Housing:	Aluminum
Input Voltage:	100V-277V	Fixture Color:	Silver
Surge Protection:	6KV	Mounting:	Eye-Hook (std) Pendant Yoke (std)
Operating Temp:	-40°F to +302°F	Dimensions:	22 in H X 19 in W X 4 in D
Rated Life:	100,000 (L70) hours	Weight:	38 lbs
		Warranty:	5 years

100 Watt LED High Temperature Fixture | 13000 Lumens | 5000K



Product Details

SKU: MLLG-LS-LED-HB-100-[Color]-HT-[V]

Web ID: 1323

100 Watt LED high temperature fixture is energy efficient with a 130 lumens/watt producing 13000 lumens output replacing 250 Watt Metal Halide.

Designed for High Temperature and Cold Temperature conditions this high temperature fixture has a massive custom heat sink that allows it to operate in temperatures from -85 F to 194 F.

You can choose either 100V-277V or 347V-480V with 4000K or 5000K color temperature. The fixture is available with Eye-Hook or Pendant mount for quick and easy installation.

Product Specifications

Watts:	100	Dimmable:	No
Lumens:	13000	Beam Angle:	10° 25° 40° 60° 90° 120°
Lumens/Watt:	130	Frequency:	50/60 hz
Replaces:	250 Watt Metal Halide	Power Factor:	> .95
Color Temp:	4000K 5000K	THD:	< 15%
CRI:	80+	Housing:	Aluminum
IP Rating:	IP66	Fixture Color:	Gray
Input Voltage:	100V-277V 347V-480V	Mounting:	Eye-Hook Pendant
Operating Temp:	-85°F to +194°F	Dimensions:	12 in X 12 in X 8.65 in
Rated Life:	70,000 hours	Weight:	13.2 lbs
		Warranty:	5 years

150 Watt LED High Temperature Fixture | 19500 Lumens | 5000K



Product Details

SKU: MLLG-LS-LED-HB-150-[Color]-HT-[V]

Web ID: 1324

150 Watt LED high temperature fixture is energy efficient with a 130 lumens/watt producing 19500 lumens output replacing 400 Watt Metal Halide.

Designed for High Temperature and Cold Temperature conditions this high temperature fixture has a massive custom heat sink that allows it to operate in temperatures from -85 F to 194 F.

You can choose either 100V-277V or 347V-480V with 4000K or 5000K color temperature. The fixture is available with Eye-Hook or Pendant mount for quick and easy installation.

Product Specifications

Watts:	150	Dimmable:	No
Lumens:	19500	Beam Angle:	10° 25° 40° 60° 90° 120°
Lumens/Watt:	130	Frequency:	50/60 hz
Replaces:	400 Watt Metal Halide	Power Factor:	> .95
Color Temp:	4000K 5000K	THD:	< 15%
CRI:	80+	Housing:	Aluminum
IP Rating:	IP66	Fixture Color:	Gray
Input Voltage:	100V-277V 347V-480V	Mounting:	Eye-Hook Pendant
Operating Temp:	-85°F to +194°F	Dimensions:	14.17 in X 13.77 in X 8.65 in
Rated Life:	70,000 hours	Weight:	19 lbs
		Warranty:	5 years

200 Watt LED High Temperature Fixture | 26000 Lumens | 5000K



Product Details

SKU: MLLG-LS-LED-HB-200-[Color]-HT-[V]

Web ID: 1325

200 Watt LED high temperature fixture is energy efficient with a 130 lumens/watt producing 26000 lumens output replacing 400 Watt Metal Halide.

Designed for High Temperature and Cold Temperature conditions this high temperature fixture has a massive custom heat sink that allows it to operate in temperatures from -85 F to 194 F.

You can choose either 100V-277V or 347V-480V with 4000K or 5000K color temperature. The fixture is available with Eye-Hook or Pendant mount for quick and easy installation.

Product Specifications

Watts:	200	Dimmable:	No
Lumens:	26000	Beam Angle:	10° 25° 40° 60° 90° 120°
Lumens/Watt:	130	Frequency:	50/60 hz
Replaces:	400 Watt Metal Halide	Power Factor:	> .95
Color Temp:	4000K 5000K	THD:	< 15%
CRI:	80+	Housing:	Aluminum
IP Rating:	IP66	Fixture Color:	Gray
Input Voltage:	100V-277V 347V-480V	Mounting:	Eye-Hook Pendant
Operating Temp:	-85°F to +194°F	Dimensions:	18.11 in X 14.17 in X 8.65 in
Rated Life:	70,000 hours	Weight:	24.6 lbs
		Warranty:	5 years

300 Watt LED High Temperature Fixture | 39000 Lumens | 5000K



Product Details

SKU: MLLG-LS-LED-HB-300-[Color]-HT-[V]

Web ID: 1326

300 Watt LED high temperature fixture is energy efficient with a 130 lumens/watt producing 39000 lumens output replacing 1000 Watt Metal Halide.

Designed for High Temperature and Cold Temperature conditions this high temperature fixture has a massive custom heat sink that allows it to operate in temperatures from -85 F to 194 F.

You can choose either 100V-277V or 347V-480V with 4000K or 5000K color temperature. The fixture is available with Eye-Hook or Pendant mount for quick and easy installation.

Product Specifications

Watts:	300	Dimmable:	No
Lumens:	39000	Beam Angle:	10° 25° 40° 60° 90° 120°
Lumens/Watt:	130	Frequency:	50/60 hz
Replaces:	1000 Watt Metal Halide	Power Factor:	> .95
Color Temp:	4000K 5000K	THD:	< 15%
CRI:	80+	Housing:	Aluminum
IP Rating:	IP66	Fixture Color:	Gray
Input Voltage:	100V-277V 347V-480V	Mounting:	Eye-Hook Pendant
Operating Temp:	-85°F to +194°F	Dimensions:	19.6 in X 16.53 in X 8.65 in
Rated Life:	70,000 hours	Weight:	38.3 lbs
		Warranty:	5 years

400 Watt LED High Temperature Fixture | 52000 Lumens | 5000K



Product Details

SKU: MLLG-LS-LED-HB-400-[Color]-HT-[V]

Web ID: 1327

400 Watt LED high temperature fixture is energy efficient with a 130 lumens/watt producing 52000 lumens output replacing 1000 Watt Metal Halide.

Designed for High Temperature and Cold Temperature conditions this high temperature fixture has a massive custom heat sink that allows it to operate in temperatures from -85 F to 194 F.

You can choose either 100V-277V or 347V-480V with 4000K or 5000K color temperature. The fixture is available with Eye-Hook or Pendant mount for quick and easy installation.

Product Specifications

Watts:	400	Dimmable:	No
Lumens:	52000	Beam Angle:	10° 25° 40° 60° 90° 120°
Lumens/Watt:	130	Frequency:	50/60 hz
Replaces:	1000 Watt Metal Halide	Power Factor:	> .95
Color Temp:	4000K 5000K	THD:	< 15%
CRI:	80+	Housing:	Aluminum
IP Rating:	IP66	Fixture Color:	Gray
Input Voltage:	100V-277V 347V-480V	Mounting:	Eye-Hook Pendant
Operating Temp:	-85°F to +194°F	Dimensions:	22 in X 20.86 in X 8.65 in
Rated Life:	70,000 hours	Weight:	45.8 lbs
		Warranty:	5 years