



Commercial Lighting



Industrial Lighting



Sports Lighting

## MLLG-LED-RETRO5 Metal Halide Retrofit Product Family



**Why  
contractors  
choose us**



Free Lighting  
Plans to ensure  
customer  
satisfaction



Dedicated  
Lighting  
Specialist for  
each project



Large  
inventory of  
LED Lights

# Table of Contents

	Page Number
- MLLG-LED-RETRO5-45-[Color]	3
- MLLG-LED-RETRO5-60-50	4
- MLLG-LED-RETRO5-100-[Color]-[HV]	5
- MLLG-LED-RETRO5-120-[Color]-[HV]	6
- MLLG-LED-RETRO5-75-[Color]-[HV]	7
- MLLG-LED-RETRO5-280-50	8
- MLLG-LED-RETRO5[A]-150-[Color]-[HV]	9
- MLLG-LED-RETRO5-45-[Color]-[HV]-R	10
- MLLG-LED-RETRO5-100-[Color]-[HV]-R	11

## 45 Watt Metal Halide LED Retrofit | 7425 Lumens | 175 Watt Replacement



### Product Details

**SKU:** MLLG-LED-RETRO5-45-[Color]

**Web ID:** 1239

45 Watt LED retrofit kit produces 7425 lumens at 165 lumens/watt and replaces 175 Watt Metal Halide inside your existing indoor or outdoor fixture. The retrofit kit is designed to replace Metal Halide bulbs and ballasts inside a sealed fixture. Active Cooling keeps this retrofit kit working for a very long time. Its equipped with a 100V-277V LED driver.

You can choose between 4000K or 5000K. This retrofit works well with existing motion sensors and photocells. Its easy to install - like doing a Metal Halide bulb and ballast replacement. You should also remove the fixtures reflector and socket as they will not be needed.

### Product Specifications

<b>Watts:</b>	45	<b>Dimmable:</b>	Optional
<b>Lumens:</b>	7425	<b>Beam Angle:</b>	120°
<b>Lumens/Watt:</b>	165	<b>Optics:</b>	120° Standard
<b>Replaces:</b>	175 Watt Metal Halide	<b>Frequency:</b>	50/60 hz
<b>Color Temp:</b>	4000K   5000K	<b>Power Factor:</b>	> .90
<b>CRI:</b>	75+	<b>THD:</b>	< 15%
<b>Input Voltage:</b>	100V-277V	<b>Dimensions:</b>	4.75 in L X 4.75 in W X 1.9 in H
<b>Operating Temp:</b>	-31°F to +131°F	<b>Weight:</b>	4
<b>Rated Life:</b>	50,000 hrs - driver   100,000 (L70) hours	<b>Warranty:</b>	5 years

## 60 Watt Metal Halide LED Retrofit | 9900 Lumens | 250 Watt Replacement | 5000K



### Product Details

**SKU:** MLLG-LED-RETRO5-60-50

**Web ID:** 1240

60 Watt LED retrofit kit produces 9900 lumens at 165 lumens/watt and replaces 250 Watt Metal Halide inside your existing indoor or outdoor fixture. The retrofit kit is designed to replace Metal Halide bulbs and ballasts inside a sealed fixture. Active Cooling keeps this retrofit kit working for a very long time. Its equipped with a 100V-277V or 277V-480V LED driver.

Color Temperature is 5000K. This retrofit works well with existing motion sensors and photocells. Its easy to install - like doing a Metal Halide bulb and ballast replacement. You should also remove the fixtures reflector and socket as they will not be needed.

Optional:

4000K (Built to Order)

### Product Specifications

<b>Watts:</b>	60	<b>Dimmable:</b>	Optional
<b>Lumens:</b>	9900	<b>Beam Angle:</b>	120°
<b>Lumens/Watt:</b>	165	<b>Optics:</b>	120° Standard
<b>Replaces:</b>	250 Watt Metal Halide	<b>Frequency:</b>	50/60 hz
<b>Color Temp:</b>	5000K	<b>Power Factor:</b>	> .90
<b>CRI:</b>	75+	<b>THD:</b>	< 15%
<b>Input Voltage:</b>	100V-277V   277V-480V	<b>Dimensions:</b>	4.75 in L X 4.75 in W X 1.9 in H
<b>Operating Temp:</b>	-31°F to +131°F	<b>Weight:</b>	4
<b>Rated Life:</b>	50,000 hrs - driver   100,000 (L70) hours	<b>Warranty:</b>	5 years

## 100 Watt Metal Halide LED Retrofit | 15500 Lumens | 400 Watt Replacement



### Product Details

**SKU:** MLLG-LED-RETRO5-100-[Color]-[HV]

**Web ID:** 1242

100 Watt LED retrofit kit produces 15500 lumens at 155 lumens/watt and replaces 400 Watt Metal Halide inside your existing indoor or outdoor fixture. The retrofit kit is designed to replace Metal Halide bulbs and ballasts inside a sealed fixture. Active Cooling keeps this retrofit kit working for a very long time. Its equipped with a 100V-277V or 347V-480V LED driver.

You can choose between 4000K or 5000K. This retrofit works well with existing motion sensors and photocells. Its easy to install - like doing a Metal Halide bulb and ballast replacement. You should also remove the fixtures reflector and socket as they will not be needed. 347-480V High Voltage Driver also available.

### Product Specifications

<b>Watts:</b>	100	<b>Dimmable:</b>	Optional
<b>Lumens:</b>	15500	<b>Beam Angle:</b>	120°
<b>Lumens/Watt:</b>	155	<b>Frequency:</b>	50/60 hz
<b>Replaces:</b>	400 Watt Metal Halide	<b>Power Factor:</b>	> .90
<b>Color Temp:</b>	4000K   5000K	<b>THD:</b>	< 15%
<b>CRI:</b>	75+	<b>Dimensions:</b>	6.1 in L X 5.2 in W X 2.75 in H
<b>Input Voltage:</b>	100V-277V   347V-480V	<b>Weight:</b>	4.5
<b>Operating Temp:</b>	-31°F to +131°F	<b>Warranty:</b>	5 years
<b>Rated Life:</b>	50,000 hrs - driver   100,000 (L70) hours		

## 120 Watt Metal Halide LED Retrofit | 18600 Lumens | 400 Watt Replacement

### Product Details

**SKU:** MLLG-LED-RETRO5-120-[Color]-[HV]

**Web ID:** 1243

120 Watt LED retrofit kit produces 18600 lumens at 155 lumens/watt and replaces 400 Watt Metal Halide inside your existing indoor or outdoor fixture. The retrofit kit is designed to replace Metal Halide bulbs and ballasts inside a sealed fixture. Active Cooling keeps this retrofit kit working for a very long time. Its equipped with a 100V-277V or 277V-480V LED driver.

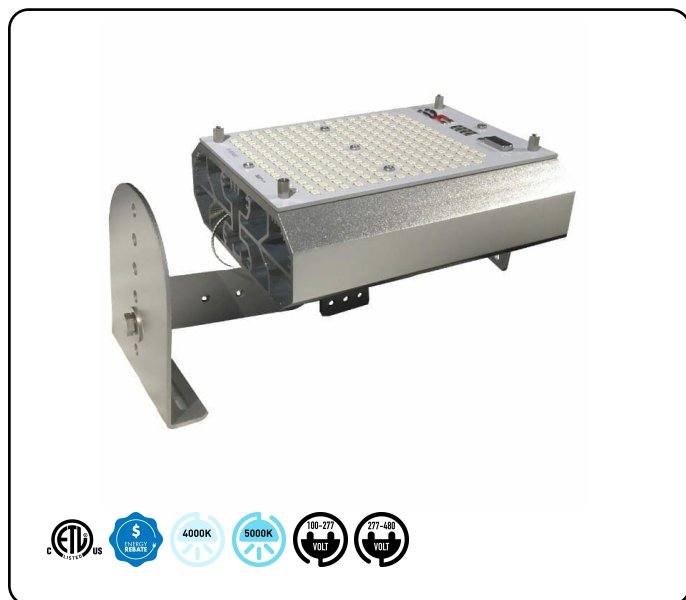
You can choose between 4000K or 5000K. This retrofit works well with existing motion sensors and photocells. Its easy to install - like doing a Metal Halide bulb and ballast replacement. You should also remove the fixtures reflector and socket as they will not be needed. 277V-480V High Voltage Driver is also available.



### Product Specifications

<b>Watts:</b>	120	<b>Dimmable:</b>	Optional
<b>Lumens:</b>	18600	<b>Beam Angle:</b>	120°
<b>Lumens/Watt:</b>	155	<b>Frequency:</b>	50/60 hz
<b>Replaces:</b>	400 Watt Metal Halide	<b>Power Factor:</b>	>0.90
<b>Color Temp:</b>	4000K   5000K	<b>THD:</b>	< 15%
<b>CRI:</b>	75+	<b>Dimensions:</b>	6.1 in L X 5.2 in W X 2.75 in H
<b>Input Voltage:</b>	100V-277V   277V-480V	<b>Weight:</b>	4.5
<b>Operating Temp:</b>	-31°F to +131°F	<b>Warranty:</b>	5 years
<b>Rated Life:</b>	50,000 hrs - driver   100,000 (L70) hours		

## 75 Watt Metal Halide LED Retrofit | 12375 Lumens | 5000K | 100-277V



### Product Details

**SKU:** MLLG-LED-RETRO5-75-[Color]-[HV]

**Web ID:** 1241

75 Watt LED retrofit kit produces 12375 lumens at 165 lumens/watt and replaces 250 Watt Metal Halide inside your existing indoor or outdoor fixture. The retrofit kit is designed to replace Metal Halide bulbs and ballasts inside a sealed fixture. Active Cooling keeps this retrofit kit working for a very long time. Its equipped with a 100V-277V or 277V-480V LED driver.

You can choose between 4000K or 5000K. This retrofit works well with existing motion sensors and photocells. Its easy to install - like doing a Metal Halide bulb and ballast replacement. You should also remove the fixtures reflector and socket as they will not be needed.

### Product Specifications

<b>Watts:</b>	75	<b>Dimmable:</b>	Optional
<b>Lumens:</b>	12375	<b>Beam Angle:</b>	120°
<b>Lumens/Watt:</b>	165	<b>Frequency:</b>	50/60 hz
<b>Replaces:</b>	250 Watt Metal Halide	<b>Power Factor:</b>	> .90
<b>Color Temp:</b>	4000K   5000K	<b>THD:</b>	< 15%
<b>CRI:</b>	75+	<b>Dimensions:</b>	6.1 in L X 5.2 in W X 2.75 in H
<b>Input Voltage:</b>	100V-277V   277V-480V	<b>Weight:</b>	4.5
<b>Operating Temp:</b>	-31°F to +131°F	<b>Warranty:</b>	5 years
<b>Rated Life:</b>	50,000 hrs - driver   100,000 (L70) hours		



## 280 Watt Metal Halide LED Retrofit | 43120 Lumens | 1000 Watt Replacement

### Product Details

**SKU:** MLLG-LED-RETRO5-280-50

**Web ID:** 1246

280 Watt LED retrofit kit produces 43120 lumens at 154 lumens/watt and replaces 1000 Watt Metal Halide inside your existing indoor or outdoor fixture. The retrofit kit is designed to replace Metal Halide bulbs and ballasts inside a sealed fixture. Active Cooling keeps this retrofit kit working for a very long time. Its equipped with your choice of a 100V-277V or 277V-480V LED driver.

Color Temperature is 5000K. This retrofit works well with existing motion sensors and photocells. Its easy to install - like doing a Metal Halide bulb and ballast replacement. You should also remove the fixtures reflector and socket as they will not be needed.

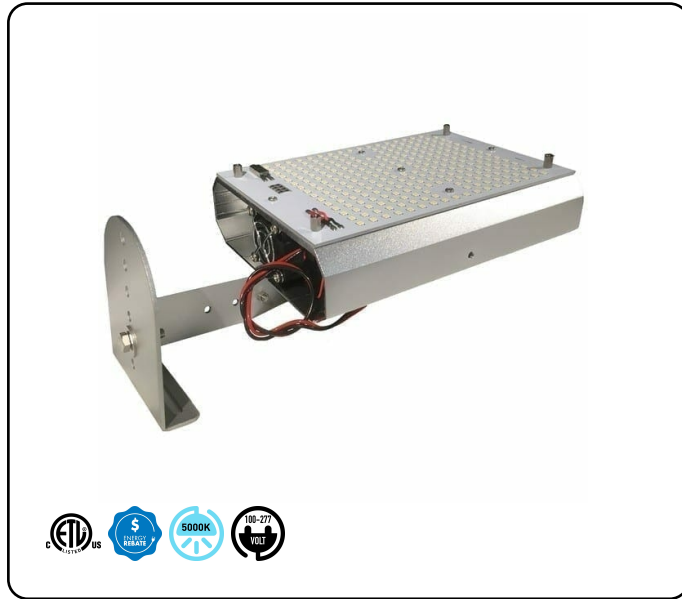


### Product Specifications

<b>Watts:</b>	280	<b>Dimmable:</b>	Optional
<b>Lumens:</b>	43120	<b>Beam Angle:</b>	120°
<b>Lumens/Watt:</b>	154	<b>Frequency:</b>	50/60 hz
<b>Replaces:</b>	1000 Watt Metal Halide	<b>Power Factor:</b>	> .90
<b>Color Temp:</b>	5000K	<b>THD:</b>	< 15%
<b>CRI:</b>	75+	<b>Dimensions:</b>	10.6 in L X 10.0 in W X 2.85 in H
<b>Input Voltage:</b>	100V-277V   277V-480V	<b>Weight:</b>	7
<b>Operating Temp:</b>	-31°F to +131°F	<b>Warranty:</b>	5 years
<b>Rated Life:</b>	50,000 hrs - driver   100,000 (L70) hours		



## 150 Watt Metal Halide LED Retrofit | 23250 Lumens | 5000K | 100-277V



### Product Details

**SKU:** MLLG-LED-RETRO5[A]-150-[Color]-[HV]

**Web ID:** 1244

150 Watt LED retrofit kit produces 23250 lumens at 155 lumens/watt and replaces 400 Watt Metal Halide inside your existing indoor or outdoor fixture. The retrofit kit is designed to replace Metal Halide bulbs and ballasts inside a sealed fixture. Active Cooling keeps this retrofit kit working for a very long time. Its equipped with a 100V-277V LED driver.

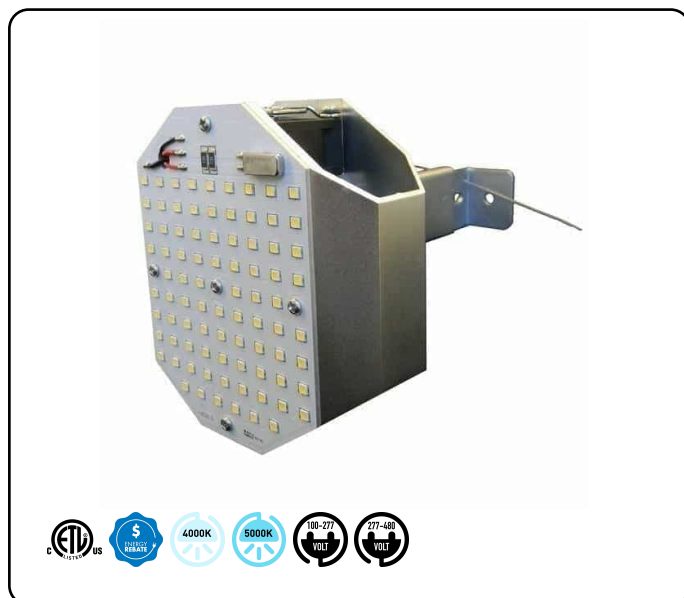
You can choose between 5000K. This retrofit works well with existing motion sensors and photocells. Its easy to install - like doing a Metal Halide bulb and ballast replacement. You should also remove the fixtures reflector and socket as they will not be needed.

Note: High Voltage 277-480V for this product. 4000K is also available. Call or chat online if you need these options.

### Product Specifications

<b>Watts:</b>	150	<b>Beam Angle:</b>	120°
<b>Lumens:</b>	23250	<b>Frequency:</b>	50/60 hz
<b>Lumens/Watt:</b>	155	<b>Power Factor:</b>	> .90
<b>Replaces:</b>	400 Watt Metal Halide	<b>THD:</b>	< 15%
<b>Color Temp:</b>	5000K	<b>Dimensions:</b>	6.7 in L X 5.9 in W X 2.75 in D
<b>CRI:</b>	75+	<b>Weight:</b>	6
<b>Input Voltage:</b>	100V-277V	<b>Warranty:</b>	5 years
<b>Operating Temp:</b>	-31°F to +131°F		
<b>Rated Life:</b>	50,000 hrs - driver   100,000 (L70) hours		

## 45 Watt LED Downlight Retrofit | 7425 Lumens | 4000K | 5000K | 100-277V



### Product Details

**SKU:** MLLG-LED-RETRO5-45-[Color]-[HV]-R

**Web ID:** 1250

45 Watt LED retrofit kit produces 7425 lumens at 165 lumens/watt and replaces 175 Watt Metal Halide inside your existing indoor or outdoor fixture. The retrofit kit is designed to replace Metal Halide bulbs and ballasts inside a recessed can fixture. Active Cooling keeps this retrofit kit working for a very long time. Its equipped with a 100V-277V or 277V-480V LED driver.

You can choose between 4000K or 5000K. Its easy to install - like doing a Metal Halide bulb and ballast replacement. You should also remove the fixtures reflector and socket as they will not be needed.

### Product Specifications

<b>Watts:</b>	45	<b>Dimmable:</b>	Optional
<b>Lumens:</b>	7425	<b>Beam Angle:</b>	120°
<b>Lumens/Watt:</b>	165	<b>Frequency:</b>	50/60 hz
<b>Replaces:</b>	175 Watt Metal Halide	<b>Power Factor:</b>	> .90
<b>Color Temp:</b>	4000K   5000K	<b>THD:</b>	< 15%
<b>CRI:</b>	75+	<b>Mounting:</b>	Recessed
<b>Input Voltage:</b>	100V-277V   277V-480V	<b>Dimensions:</b>	4.75 in L X 4.75 in W X 1.9 in H
<b>Operating Temp:</b>	-31°F to +131°F	<b>Weight:</b>	4
<b>Rated Life:</b>	50,000 hrs - driver   100,000 (L70) hours	<b>Warranty:</b>	5 years

## 100 Watt LED Downlight Retrofit | 15500 Lumens | 4000K | 5000K | 100-277V



### Product Details

**SKU:** MLLG-LED-RETRO5-100-[Color]-[HV]-R

**Web ID:** 1252

100 Watt LED retrofit kit produces 15500 lumens at 155 lumens/watt and replaces 400 Watt Metal Halide inside your existing indoor or outdoor fixture. The retrofit kit is designed to replace Metal Halide bulbs and ballasts inside a recessed can fixture. Active Cooling keeps this retrofit kit working for a very long time. Its equipped with a 100V-277V or 277V-480V LED driver.

You can choose between 4000K or 5000K. Its easy to install - like doing a Metal Halide bulb and ballast replacement. You should also remove the fixtures reflector and socket as they will not be needed.

### Product Specifications

<b>Watts:</b>	100	<b>Dimmable:</b>	Optional
<b>Lumens:</b>	15500	<b>Beam Angle:</b>	120°
<b>Lumens/Watt:</b>	155	<b>Frequency:</b>	50/60 hz
<b>Replaces:</b>	400 Watt Metal Halide	<b>Power Factor:</b>	> .90
<b>Color Temp:</b>	4000K   5000K	<b>THD:</b>	< 15%
<b>CRI:</b>	75+	<b>Mounting:</b>	Recessed
<b>Input Voltage:</b>	100V-277V   277V-480V	<b>Dimensions:</b>	6.1 in L X 5.2 in W X 2.75 in H
<b>Operating Temp:</b>	-31°F to +131°F	<b>Weight:</b>	4.5
<b>Rated Life:</b>	50,000 hrs - driver   100,000 (L70) hours	<b>Warranty:</b>	5 years