



Commercial Lighting



Industrial Lighting



Sports Lighting

MLLG-E-LED-EXPLH Explosion Proof Product Family



**Why
contractors
choose us**



Free Lighting
Plans to ensure
customer
satisfaction



Dedicated
Lighting
Specialist for
each project

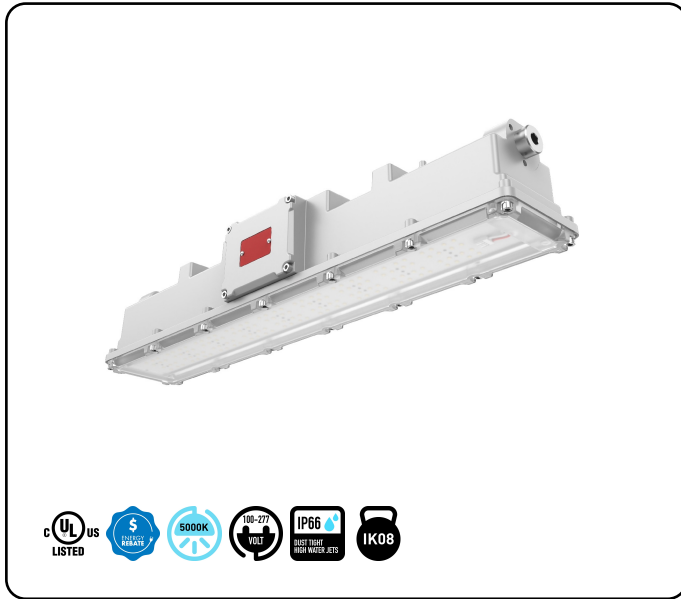


Large
inventory of
LED Lights

Table of Contents

	Page Number
- LLS-EXPLH-2-50-5-C1D2-10YW	3
- LLS-EXPLH-4-100-5-C1D2-10YW	4
- MLLG-E-LED-EXPLH-[40/60]-50-[V]-C1D2	5

50 Watt 2 Foot Explosion Proof Linear LED Light | 8000 Lumens | Class 1 Div 2



Product Details

SKU: LLS-EXPLH-2-50-5-C1D2-10YW

Web ID: 2315

Key Features: Wattage: 50 - Lumens: 8000 - Lumens Per Watt: 160 - Replaces: 250 Watt Metal Halide - Voltage: 100V-277V - Expl Rating: Class 1 Division 2 or Class 2 Division 2 - Color Temperature: 5000K - CRI: 70 - Dimming: 1-10V - Beam Angles: 120 - Optics: Polycarbonate - Lifespan: 150 000 (L70) hours - Mounting: Pendant or Trunion - Fixture Color: Gray - Frequency: 50-60Hz - Power Factor: .90 - THD: 10%

Durable Construction: Housing: Fiberglass reinforced polycarbonate - IP Rating: IP66 - IK Rating: IK08 - Surge Protection: 4kV line-line 6kV line-earth - Operating Temperature: -40 F to 113 F - Certifications: UL | Rebate Eligible - Warranty: 10 years

Features/Accessories: Explosion Proof C1D2 - Dimming: 1-10V

Measurements: Dimensions: 24.33 in L x 4.73 in W x 4.85 in H - Weight: 7.7 lbs - Cord Length: none

Notes: Class 1 Division 2 Group B C D - Class 2 Division 2 Groups F G - Class 3 - Wet Locations (UL 1598 / UL1598A) - UL844 - CSA - ATEX - IECEX

Product Specifications

Watts:	50	Beam Angle:	120 deg
Lumens:	8000	Optics:	Polycarbonate
Lumens/Watt:	160	Frequency:	50-60Hz
Replaces:	250 Watt Metal Halide	Power Factor:	>.90
Color Temp:	5000K	THD:	< 10%
CRI:	70+	Housing:	Fiberglass reinforced polycarbonate
IP Rating:	IP66	Fixture Color:	Gray
IK Rating:	IK08	Mount:	Pendant Trunion
Voltage:	100V-277V	Dimensions:	24.33 in L x 4.73 in W x 4.85 in H
Surge Protection:	4kV line-line, 6kV line-earth	Cord Length:	none
Operating Temp:	-40 degF to 113 degF	Weight:	7.7 lbs
Rated Life:	150,000 (L70) hours	Warranty:	10 years
Dimmable:	1-10V		

100 Watt 4 Foot Explosion Proof Linear LED Light | 16000 Lumens



Product Details

SKU: LLS-EXPLH-4-100-5-C1D2-10YW

Web ID: 2316

Key Features: Wattage: 100 - Lumens: 16000 - Lumens Per Watt: 160 - Replaces: 250 Watt Metal Halide - Voltage: 100V-277V - Expl Rating: Class 1 Division 2 or Class 2 Division 2 - Color Temperature: 5000K - CRI: 70 - Dimming: 1-10V - Beam Angles: 120 - Optics: Polycarbonate - Lifespan: 150 000 (L70) hours - Mounting: Pendant or Trunion - Fixture Color: Gray - Frequency: 50-60Hz - Power Factor: .90 - THD: 10%

Durable Construction: Housing: Fiberglass reinforced polycarbonate - IP Rating: IP66 - IK Rating: IK08 - Surge Protection: 6kV line-line 10kV line-earth - Operating Temperature: -40 F to 104 F - Certifications: UL | Rebate Eligible - Warranty: 10 years

Features/Accessories: Explosion Proof C1D2 - Dimming: 1-10V

Measurements: Dimensions: 48.5 in L x 4.73 in W x 4.85 in H - Weight: 11.2 lbs - Cord Length: none

Notes: Class 1 Division 2 Group B C D - Class 2 Division 2 Groups F G - Class 3 - Wet Locations (UL 1598 / UL1598A) - UL844 - CSA - ATEX - IECEx

Product Specifications

Watts:	100	Beam Angle:	120 deg
Lumens:	16000	Optics:	Polycarbonate
Lumens/Watt:	160	Frequency:	50-60Hz
Replaces:	250 Watt Metal Halide	Power Factor:	>.90
Color Temp:	5000K	THD:	< 10%
CRI:	70+	Housing:	Fiberglass reinforced polycarbonate
IP Rating:	IP66	Fixture Color:	Gray
IK Rating:	IK08	Mount:	Pendant Trunion
Voltage:	100V-277V	Dimensions:	48.5 in L x 4.73 in W x 4.85 in H
Surge Protection:	6kV line-line, 10kV line-earth	Cord Length:	none
Operating Temp:	-40 degF to 104 degF	Weight:	11.2 lbs
Rated Life:	150,000 (L70) hours	Warranty:	10 years
Dimmable:	1-10V		

40 / 60 Watt Explosion Proof Linear LED Light | 5600 / 8400 Lumens



Product Details

SKU: MLLG-E-LED-EXPLH-[40/60]-50-[V]-C1D2

Web ID: 1604

40 | 60 Watt LED Explosion Proof - Class 1 Division 2 light is a compact linear fixture that replaces fluorescent lighting for hazardous locations.

UL Specs: UL 844 Hazardous Locations - Class I Division 2 Groups A B C D - Class II Division 1 Groups E F G - Class II Division 2 Groups F G - Class III - UL 1598 Suitable for Wet Locations - UL 1598A Marine Outside Type - ABS

Key Features: Wattage: 40 | 60 - Lumens: 5600 | 8400 - Lumens Per Watt: 140 - Replaces: 175 or 250 Watt Metal Halide - Voltage: 100V-277V or 277V-480V - Expl Rating: Class 1 Division 2 or Class 2 Division 2 - Color Temperature: 5000K - CRI: 70 - Dimming: 1-10V - Beam Angles: 120 - Optics: Polycarbonate Lens - Lifespan: 50 000 (L70) hours - Mounting: Bracket or Surface or Wall or 3/4 in NPT Pendant - Fixture Color: Gray - Frequency: 50-60Hz - Power Factor: .95 - THD: 10%

Durable Construction: Housing: Copper Free Aluminum - IP Rating: IP66 - IK Rating: IK10 - Operating Temperature: -40 F to 140 F - Certifications: ETL | Rebate Eligible - Warranty: 5 years

Features/Accessories: Explosion Proof C1D2 - Dimming: 1-10V

Product Specifications

Watts:	40 60	Dimmable:	1-10V
Lumens:	5600 8400	Beam Angle:	120 deg
Lumens/Watt:	140	Optics:	Polycarbonate Lens
Replaces:	175 250 Watt Metal Halide	Frequency:	50-60Hz
Color Temp:	5000K	Power Factor:	>.95
CRI:	70+	THD:	< 10%
IP Rating:	IP66	Housing:	Copper Free Aluminum
IK Rating:	IK10	Fixture Color:	Gray
Voltage:	100V-277V 277V-480V	Mount:	Bracket Surface Wall 3/4 in NPT Pendant
Operating Temp:	-40 degF to 140 degF	Warranty:	5 years
Rated Life:	50,000 (L70) hours		