



Commercial Lighting

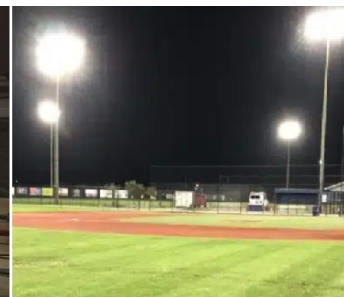


Industrial Lighting



Sports Lighting

MLLG-E-LED-EXPLD Explosion Proof Product Family



**Why
contractors
choose us**



Free Lighting
Plans to ensure
customer
satisfaction



Dedicated
Lighting
Specialist for
each project

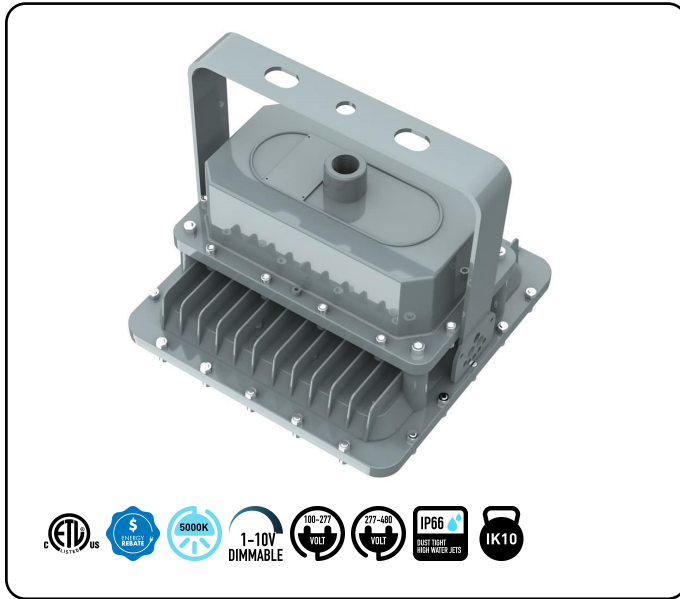


Large
inventory of
LED Lights

Table of Contents

	Page Number
- MLLG-E-LED-EXPLD-80-50-C1D1-[V]	3
- MLLG-E-LED-EXPLD-100-50-C1D1-[V]	4
- MLLG-E-LED-EXPLD-150-50-C1D1-[V]	5
- MLLG-E-LED-EXPLD-60-50-C1D1	6

80 Watt Square LED Explosion Proof Fixture | 11200 Lumens | Class 1 Div 1



Product Details

SKU: MLLG-E-LED-EXPLD-80-50-C1D1-[V]

Web ID: 1280

80 Watt LED Explosion Proof - Class 1 Division 1 produces 11200 lumens at 140 lumens/watt replacing 250 Watt Metal Halide. The fixture can work as both a high bay / low bay or flood light. It comes with either 100V-277V or 277V-480V LED driver. Color temperature is 5000K. Choose between 120 (std) Special Order: 40 60 90 beam angles. This fixture comes with the Yoke or 3/4 in NPT Pendant mount. The fixture can be angled if required. Fixture is IP66 wet location rated as well as Impact Rated at IK10 the strongest rating available. This fixture can operate in temperature conditions between -40 F to 140 F. Built-in 10KvA surge protection.

UL844 Certifications

Class 1 Division 1 Group C D

Class 1 Division 2 Groups A B C D

Class 2 Division 1 Groups E F G

Class 2 Division 2 Groups F G

Class 3

Zones: 1/2 21/22

Wet Locations (UL 1598) UL844 CSA ATEX IECEx

Product Specifications

Watts:	80	Dimmable:	0-10V
Lumens:	11200	Beam Angle:	120° (std) Special Order
Lumens/Watt:	140	Optics:	Tempered Glass Lens
Replaces:	250 Watt Metal Halide	Frequency:	50-60Hz
Color Temp:	5000K	Power Factor:	>.95
CRI:	70+	THD:	< 10%
IP Rating:	IP66	Housing:	Copper Free Aluminum
IK Rating:	IK10	Fixture Color:	Gray
Input Voltage:	100V-277V 277V-480V	Mounting:	Yoke 3/4 in NPT Pendant
Surge Protection:	10KvA	Dimensions:	11.6 in x 11.6 in x 9.57 in
Operating Temp:	-40°F to +140°F	Weight:	26.9
Rated Life:	50,000 (L70) hours	Warranty:	5 years

100 Watt Square LED Explosion Proof Light | 14000 Lumens | Class 1 Div 1



Product Details

SKU: MLLG-E-LED-EXPLD-100-50-C1D1-[V]

Web ID: 1281

100 Watt LED Explosion Proof - Class 1 Division 1 Fixture produces 14000 lumens at 140 lumens/watt replacing 400 Watt Metal Halide. The fixture can work as both a high bay / low bay or flood light. It comes with either 100V-277V or 277V-480V LED driver. Color temperature is 5000K. Choose between 120 (std) Special Order: 40 60 90 beam angles. This fixture comes with the Yoke mount.

The fixture can be angled if required. Fixture is IP66 wet location rated as well as Impact Rated at IK10 the strongest rating available. This fixture can operate in temperature conditions between -40 F to 140 F. Built-in 10KvA surge protection.

BAA/TAA available for this product

UL844 Certifications

Class 1 Division 1 Group C D

Class 1 Division 2 Groups A B C D

Class 2 Division 1 Groups E F G

Class 2 Division 2 Groups F G

Class 3

Zones: 1/2 21/22

Wet Locations (UL 1598) UL844 CSA ATEX IECEx

Product Specifications

Watts:	100	Dimmable:	1-10V
Lumens:	14000	Beam Angle:	120° (std) Special Order
Lumens/Watt:	140	Optics:	Tempered Glass Lens
Replaces:	400 Watt Metal Halide	Frequency:	50-60Hz
Color Temp:	5000K	Power Factor:	>.95
CRI:	70+	THD:	< 10%
IP Rating:	IP66	Housing:	Copper Free Aluminum
IK Rating:	IK10	Fixture Color:	Gray
Input Voltage:	100V-277V 277V-480V	Mounting:	Yoke
Surge Protection:	10KvA	Dimensions:	15.7 in X 11.2 in X 9.96 in
Operating Temp:	-40°F to +140°F	Weight:	26.9
Rated Life:	50,000 (L70) hours	Warranty:	5 years

150 Watt Square LED Explosion Proof Light | 21000 Lumens | Class 1 Div 1



Product Details

SKU: MLLG-E-LED-EXPLD-150-50-C1D1-[V]

Web ID: 1282

150 Watt LED Explosion Proof - C1D1 produces 21000 lumens at 140 lumens/watt replacing 400 Watt Metal Halide. The fixture can work as both a high bay / low bay or flood light. It comes with either 100V-277V or 277V-480V LED driver. Color temperature is 5000K. Choose between 120 (std) Special Order: 40 60 90 beam angles. This fixture comes with the Yoke mount. The fixture can be angled if required.

Fixture is IP66 wet location rated as well as Impact Rated at IK10 the strongest rating available. This fixture can operate in temperature conditions between -40 F to 140 F. Built-in 10KvA surge protection.

BAA/TAA is available for this product

UL844 Certifications

Class 1 Division 1 Group C D

Class 1 Division 2 Groups A B C D

Class 2 Division 1 Groups E F G

Class 2 Division 2 Groups F G

Class 3

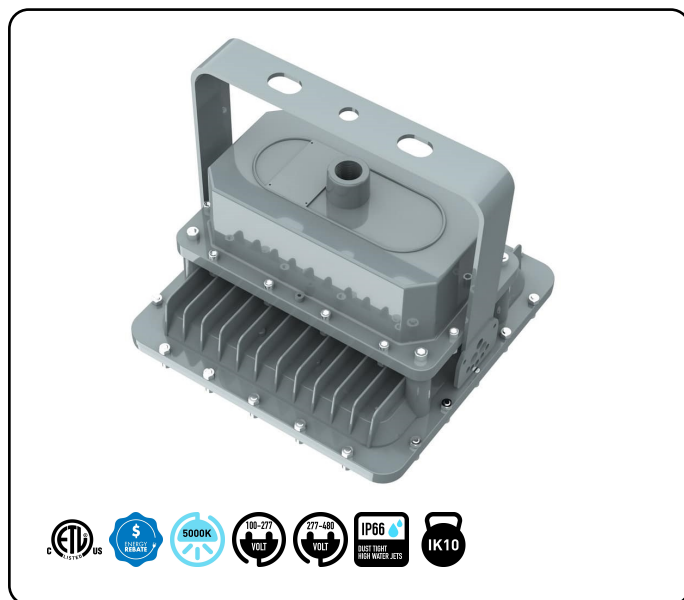
Zones: 1/2 21/22

Wet Locations (UL 1598) UL844 CSA ATEX IECEx

Product Specifications

Watts:	150	Dimmable:	1-10V
Lumens:	21000	Beam Angle:	120° (std) Special Order
Lumens/Watt:	140	Optics:	Tempered Glass Lens
Replaces:	400 Watt Metal Halide	Frequency:	50-60Hz
Color Temp:	5000K	Power Factor:	>.95
CRI:	70+	THD:	< 10%
IP Rating:	IP66	Housing:	Copper Free Aluminum
IK Rating:	IK10	Fixture Color:	Gray
Input Voltage:	100V-277V 277V-480V	Mounting:	Yoke
Surge Protection:	10KvA	Dimensions:	15.7 in X 11.2 in X 9.96 in
Operating Temp:	-40°F to +140°F	Weight:	26.9
Rated Life:	50,000 (L70) hours	Warranty:	5 years

60 Watt LED Explosion Proof Light | 8100 Lumens | Class 1 Div 1



Product Details

SKU: MLLG-E-LED-EXPLD-60-50-C1D1

Web ID: 1734

60 Watt LED Explosion Proof - Class 1 Division 1 produces 8100 lumens at 135 lumens/watt replacing 250 Watt Metal Halide. The fixture can work as both a high bay / low bay or flood light. It comes with either 100V-277V or 277V-480V Optional LED driver. Color temperature is 5000K. Choose between 120 (std) Special Order: 40 60 90 beam angles. This fixture comes with the Yoke or 3/4 in NPT Pendant mount. The fixture can be angled if required. Fixture is IP66 wet location rated as well as Impact Rated at IK10 the strongest rating available. This fixture can operate in temperature conditions between -40 F to 149 F. Built-in 10KvA surge protection.

UL844 Certifications

Class 1 Division 1 Group C D

Class 1 Division 2 Groups A B C D

Class 2 Division 1 Groups E F G

Class 2 Division 2 Groups F G

Class 3

Zones: 1/2 21/22

Wet Locations (UL 1598) UL844 CSA ATEX IECEx

Product Specifications

Watts:	60	Dimmable:	No
Lumens:	8100	Beam Angle:	120° (std) Special Order
Lumens/Watt:	135	Optics:	Tempered Glass Lens
Replaces:	250 Watt Metal Halide	Frequency:	50-60Hz
Color Temp:	5000K	Power Factor:	>.95
CRI:	70+	THD:	< 10%
IP Rating:	IP66	Housing:	Copper Free Aluminum
IK Rating:	IK10	Fixture Color:	Gray
Input Voltage:	100V-277V 277V-480V Optional	Mounting:	Yoke 3/4 in NPT Pendant
Surge Protection:	10KvA	Dimensions:	11.6 in x 11.6 in x 9.57 in
Operating Temp:	-40°F to +149°F	Weight:	26.9
Rated Life:	50,000 (L70) hours	Warranty:	5 years