



Commercial Lighting



Industrial Lighting



Sports Lighting

MLLG-E-EXPL-Mount Explosion Proof Product Family



**Why
contractors
choose us**



Free Lighting
Plans to ensure
customer
satisfaction



Dedicated
Lighting
Specialist for
each project

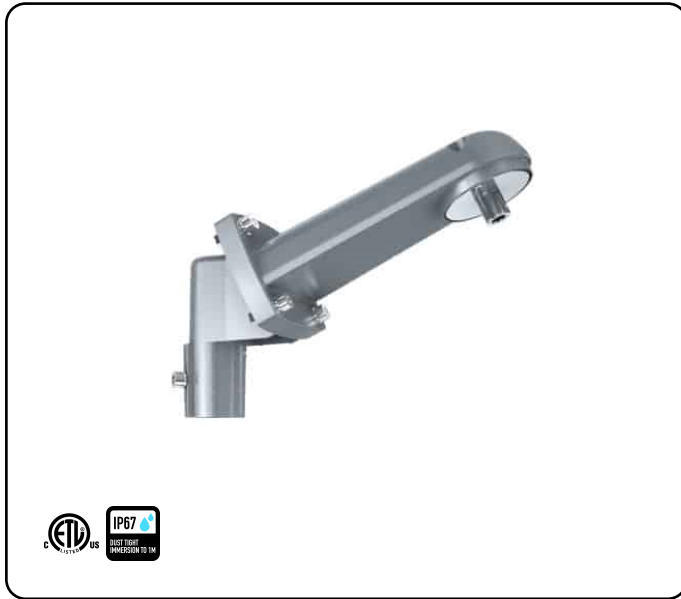


Large
inventory of
LED Lights

Table of Contents

	Page Number
- MLLG-E-EXPL-SM25	3
- MLLG-E-EXPL-SM-90	4
- MLLG-E-EXPL-Wall-ARM	5
- MLLG-E-EXPL-WALL-25-JB	6
- MLLG-E-EXPL-WALL-90-JB	7
- MLLG-E-EXPL-HK-ADAPTER	8
- MLLG-E-EXPL-SF-Adapter	9

Explosion Proof Stanchion | 25 Degree Mount | Class 1 Div 2 | Class 2 Div 2



Product Details

SKU: MLLG-E-EXPL-SM25

Web ID: 1989

Explosion Proof 25 Stanchion Mounting Bracket. Designed for our Explosion Proof EXPLA fixtures and our Explosion Proof EXPLB fixtures.

Product Specifications

IP Rating:	IP67	Class 1 Div 2:	Groups E,F,G
Mounting:	25° Stanchion	Class 2 Div 1:	Groups A,B,C,D
Max size pipe / tenon:	1.96 in	Warranty:	5 years

Explosion Proof Stanchion | 90 Degree Mount | Class 1 Div 2 | Class 2 Div 2



Product Details

SKU: MLLG-E-EXPL-SM-90

Web ID: 1990

Explosion Proof 90 Stanchion Mounting Bracket. Designed for our Explosion Proof EXPLA fixtures and our Explosion Proof EXPLB fixtures.

Product Specifications

IP Rating:	IP67	Class 1 Div 2:	Groups E,F,G
Mounting:	90° Stanchion	Class 2 Div 1:	Groups A,B,C,D
Max size pipe / tenon:	1.96 in	Warranty:	5 years

Explosion Proof Wall Mount Arm Bracket | Class 1 Div 2 | Class 2 Div 2



Product Details

SKU: MLLG-E-EXPL-Wall-ARM

Web ID: 1995

Explosion Proof Wall Mount Arm Bracket. Designed for our Explosion Proof EXPLA fixtures Explosion Proof EXPLB fixtures.

Product Specifications

IP Rating:	IP67	Class 2 Div 1:	Groups E,F,G
Mounting:	Wall Mount Arm Bracket	Warranty:	5 years
Class 1 Div 2:	Groups A,B,C,D		

Explosion Proof Arm Bracket With Junction Box | 25 Degree Mount



Product Details

SKU: MLLG-E-EXPL-WALL-25-JB

Web ID: 1991

Explosion Proof 25 Wall Arm Bracket With Junction Box. Designed for our Explosion Proof EXPLA fixtures Explosion Proof EXPLB fixtures Explosion Proof EXPLC fixtures Explosion Proof EXPLD fixtures and Explosion Proof EXPLG fixtures

Product Specifications

IP Rating:	IP67	Class 2 Div 1:	Groups E, F, G
Mounting:	25° Wall Arm Bracket With Junction Box	Class 2 Div 2:	Groups F, G
Class 1 Div 1:	Groups A, B, C, D	Warranty:	5 years
Class 1 Div 2:	Groups A, B, C, D		

Explosion Proof Arm Bracket With Junction Box | 90 Degree Mount



Product Details

SKU: MLLG-E-EXPL-WALL-90-JB

Web ID: 1992

Explosion Proof 90 Wall Arm Bracket With Junction Box. Designed for our Explosion Proof EXPLA fixtures Explosion Proof EXPLB fixtures Explosion Proof EXPLC fixtures Explosion Proof EXPLD fixtures and Explosion Proof EXPLG fixtures

Product Specifications

IP Rating:	IP67	Class 2 Div 1:	Groups E, F, G
Mounting:	90° Wall Arm Bracket With Junction Box	Class 2 Div 2:	Groups F, G
Class 1 Div 1:	Groups A, B, C, D	Warranty:	5 years
Class 1 Div 2:	Groups A, B, C, D		

Explosion Proof Hook Adapter | 3/4 Inch NTP | Class 1 Div 2 | Class 2 Div 2



Product Details

SKU: MLLG-E-EXPL-HK-ADAPTER

Web ID: 1993

Explosion Proof Hook Adapter. Designed for our Explosion Proof EXPLA fixtures and Explosion Proof EXPLB fixtures.

Product Specifications

IP Rating:	IP67	Class 2 Div 1:	Groups E,F,G
Mounting:	Hook	Warranty:	5 years
Class 1 Div 2:	Groups A,B,C,D		

Explosion Proof Slipfitter Adapter | Class 1 Div 2 | Class 2 Div 2



Product Details

SKU: MLLG-E-EXPL-SF-Adapter

Web ID: 1994

Explosion Proof Slipfitter Adapter for Trunnion Mount. Designed for our Explosion Proof EXPLA fixtures Explosion Proof EXPLB fixtures Explosion Proof EXPLSTA1 fixtures and Explosion Proof EXPLSTA2 fixtures

Product Specifications

IP Rating:	IP67	Class 2 Div 1:	Groups E,F,G
Mounting:	Slipfitter Adapter for Trunnion	Warranty:	5 years
Class 1 Div 2:	Groups A,B,C,D		