

# MLLG-WG-POLE-CP-30-5SQ-AB

30 Foot Square Fiberglass Light Pole

Project Name \_\_\_\_\_



## DETAILS

Our 30-foot square composite fiberglass light poles are 5 inches square. These 30-foot anchor composite poles conform to AASHTO and ANSI specifications. They are non-conductive and environmentally safe as well as inert and non-toxic / non-leaching. All poles are coated in fluoropolymer long-life coating and come with a 7-year warranty.

Manufactured in the USA Rot, Rust, Corrosion and Fire Resistant 7-year warranty

## OVERVIEW

**SKU** MLLG-WG-POLE-CP-30-5SQ-AB

**Warranty** 7-year warranty

**Color Options** Bronze | Black | White | Gray | Custom

## PRODUCT DIMENSIONS

**Total Height** 30 Feet

**Gauge** .25 in

**Weight** 123 lbs



## MAXIMUM EPA

Wind Speed	70 mph	80 mph	90 mph	100 mph	
EPA Rating	13.0	8.0	4.7	2.2	



Product design upgrades may result in specification changes without notice. Speak to a Product Specialist for the latest information.

[www.ledlightingsupply.com](http://www.ledlightingsupply.com) (888) 423-3191

Headquartered at: 1 Chestnut Street, 4M Nashua NH 03060

WebID : 2510

# MLLG-WG-POLE-CP-30-5SQ-AB

30 Foot Square Fiberglass Light Pole

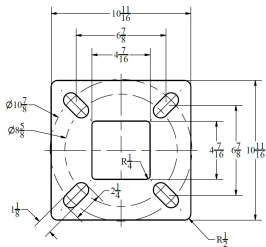
Project Name \_\_\_\_\_



## PRODUCT FAMILY MODELS

SKU	Total Height	Height Above Grade	Buried Depth
MLLG-WG-POLE-CP-18-4SQ-AB	18 Feet		
MLLG-WG-POLE-CP-20-4SQ-AB	20 Feet		
MLLG-WG-POLE-CP-25-5SQ-AB	25 Feet		
MLLG-WG-POLE-CP-30-5SQ-AB	30 Feet		

## SAMPLE COMPLETED PROJECTS WITH THIS PRODUCT



Product design upgrades may result in specification changes without notice. Speak to a Product Specialist for the latest information.

[www.ledlightingsupply.com](http://www.ledlightingsupply.com) (888) 423-3191

Headquartered at: 1 Chestnut Street, 4M Nashua NH 03060

WebID : 2510