

# LLS-MC-POLE-ST-50-AB-1-10FT

50 Foot Stadium Light Pole

Project Name \_\_\_\_\_



## DETAILS

50-foot steel stadium light pole with single 10ft cross arm, built for 115 MPH winds. Hot-dip galvanized finish ensures durability. 850lb S235 steel construction, 8-gauge thickness, anchor base installation. Certified wind load rating, sports facility grade.

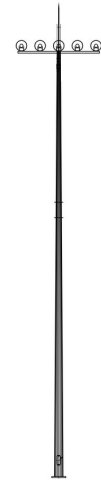
✓ 1-year warranty

## OVERVIEW

SKU	LLS-MC-POLE-ST-50-AB-1-10FT
Warranty	1-year warranty
Finish	Hot Dip Galvanized

## ↗ PRODUCT DIMENSIONS

Total Height	50 Feet
Number of Anchor Bolts	8
Number of Cross Arms	1
Cross Arm Length	10 Feet
Wind Load Rating	115 mph
Anchor Bolt Length	43 in
Anchor Bolt Size	1.18 in
Weight	850 lbs



Product design upgrades may result in specification changes without notice. Speak to a Product Specialist for the latest information.

🌐 [www.ledlightingsupply.com](http://www.ledlightingsupply.com) ☎ (888) 423-3191

Headquartered at: 1 Chestnut Street, 4M Nashua NH 03060

WebID : 2117

# LLS-MC-POLE-ST-50-AB-1-10FT

50 Foot Stadium Light Pole

Project Name \_\_\_\_\_



## 🔍 PRODUCT FAMILY MODELS

SKU	Total Height	Height Above Grade	Buried Depth
LLS-MC-POLE-ST-50-AB-1-10FT	50 Feet		
LLS-MC-POLE-ST-50-AB-2-10FT	50 Feet		
LLS-MC-POLE-ST-60-AB-1-10FT	60 Feet		
LLS-MC-POLE-ST-60-AB-2-10FT	60 Feet		



Product design upgrades may result in specification changes without notice. Speak to a Product Specialist for the latest information.

🌐 [www.ledlightingsupply.com](http://www.ledlightingsupply.com) 📞 (888) 423-3191

Headquartered at: 1 Chestnut Street, 4M Nashua NH 03060

WebID : 2117