

## CRS SQUARE lenses for CREE XR-E LEDs



- Specially designed for Cree XR-E series of LEDs, works also well with other XR types
- Lens material optical grade PC with high UV and temperature resistance (130°C/220°F). Allows use of high current and temperature conditions
- Best available optical efficiency, up to 90%
- Very even color distribution over the whole beam angle
- Integrated holder. Fastening to heat sink with a PU foam adhesive tape of automotive grade Compact dimensions 21.6 x 21.6 mm. Square form enables easy build of matrix without any gaps between lenses.
- Easy build of a complete luminaire using CRS lens, Cree XR-E and heat sink

### LENS TYPES

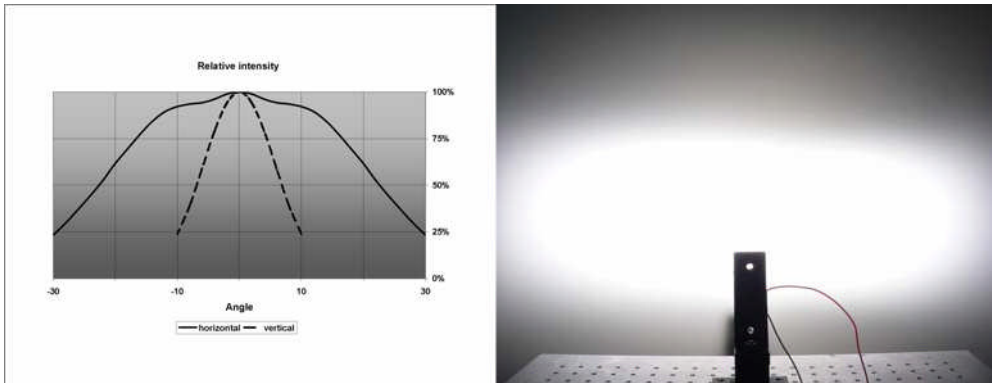
NAME	ORDERING CODE	FWHM Angle
CR SQUARE REAL SPOT*	CRS-RS	±6°
CR SQUARE SMOOTH SPOT*	CRS-SS	+7°
CR SQUARE DIFFUSER	CRS-D	+7°
CR SQUARE MEDIUM	CRS-M	±14°
CR SQUARE WIDE	CRS-W	±30°
CR SQUARE OVAL	CRS-O	±6° x ±24°

#### \*) IMPORTANT NOTICE:

**REAL SPOT** lens is a highly efficient pure collimator lens, which optically functions in an excellent way, giving a high intensity. REAL SPOT lens also reveals the chip level optical structure of the LED. We recommend REAL SPOT lens for applications, where light intensity is of highest priority, while we do not recommend it for white light applications, where color uniformity is of high importance.

**SMOOTH SPOT** lens is a pure collimator lens with light mixing properties. It smoothens the beam pattern and makes a uniform color distribution over the whole beam angle. Light intensity is lower than for the REAL SPOT lens. SMOOTH SPOT lens is recommended for white light applications, where pleasant, high-quality illumination is wished.

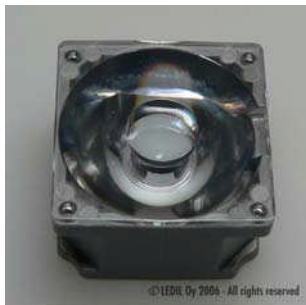
## CRS-0



## CRS-W

**COMING SOON!!!**

## PHOTOS



**CRS-RS**



**CRS-SS**



**CRS-D**



**CRS-M**



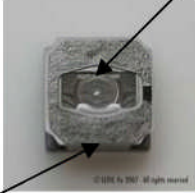
**CRS-W**



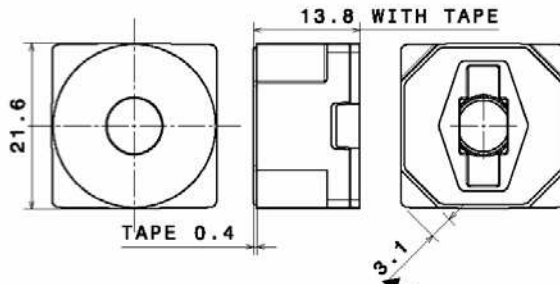
**CRS-0**

## DIMENSIONS

Easy & accurate positioning



Adhesive tape for quick and secure fastening.



Space for D=5.0 mm screw head between the lenses for fastening of PCB

## PACKAGING



CRS lenses are delivered on adhesive tape liner sheets, each sheet containing 60 lenses.